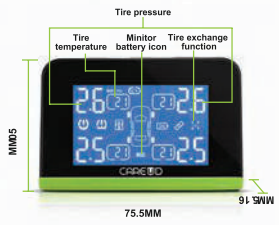
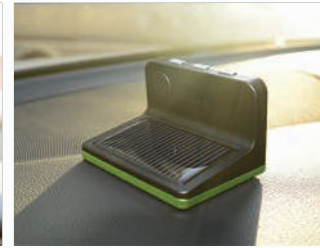




INSTALLATION



Two charging mode for option, connect the power supply can be filled with an hour. Rainy days and nights can be used normally.



L: 75.5mm H: 50mm W: 61.5mm



MONITOR SPECIFICATIONS:

Input voltage: DC 5V
Frequency: 433.92 MHz
Working temperature: - 20°C ~ 80°C
Size: 75.5mm*61.5mm*50mm (L*W*H)
Weight: 78g

