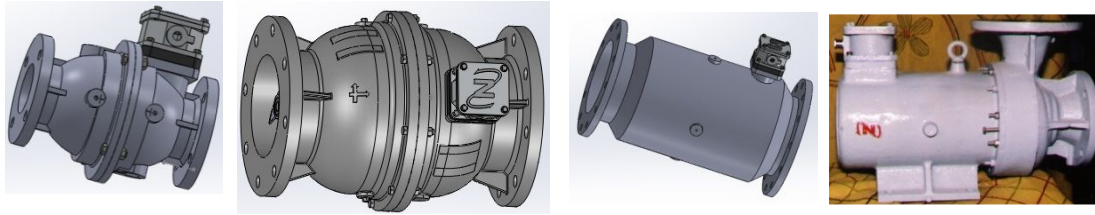


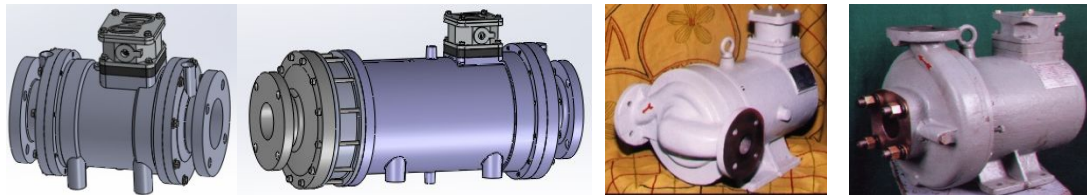


APPLICATION:

Designed for Forced Circulation of oil through Cooling systems of large Transformers. (Power & Distribution Transformers)



Very specialized circulating pumps for the refrigerating oil pipings of static or mobile transformers and converters, mainly used in locomotives, E.M.U 'S.



Pumps for Furnace and Rectifier Transformers & Hivac transformer oil filter machines.

STANDARD FEATURES	OPTIONAL FEATURES
<ul style="list-style-type: none"> • GLANDLESS Monoblock • Frictionless Bearings (Heavy Duty Long Operational Life) • 2pole to 4/6 pole speed-as required • 230 / 415 Volts, 1 PH & 3 PH, 50 Hz/60Hz • 'F' class Insulation • Pedestal (Foot) / Flange Mounted • IP-55 PROTECTION • Premium Quality Gravity Diecastings for Axial Flow Pumps (Higher Surface Finish & Tolerance)Production cost Saving 	<ul style="list-style-type: none"> • 'H' class Insulation • Non-Ferrous Impeller for Centrifugal Pumps • Special Bearings • Voltage range - as required • IP-67 PROTECTION