

# Evalsys™ Performance Measurement and Evaluation System



- Define Systems..... >>
- Define Services..... >>
- Define Service Indicators..... >> ■ Define Financial / Social Indicators..... >>
- Participating ULBs..... >>
- Data Entry: Service Indicators..... >> ■ Data Entry: Financial / Social Indicators >>
- Specify Benchmark Value..... >>
- Analysis: Service Indicators..... >> ■ Analysis: Financial / Social Indicators.... >>
- Print Data and Questionnaires..... >>

Exit Application
Refresh

Evalsys™ - a Performance Measurement and Evaluation System is designed as a tool for measuring the performance of an Urban Local Body's performance in its various areas of Service delivery and operations. A well-designed Project Monitoring System (PMS) can support the existing Management Information System (MIS) to help improve efficiency and effectiveness of management reporting at the Urban Local Body (ULB).

Evalsys™ will help the urban planners and managers tell the level of service delivery in terms of its efficiency, quality and effectiveness in comparison to other similar systems through a software based analytical system for Trend Analysis and Service Delivery comparison

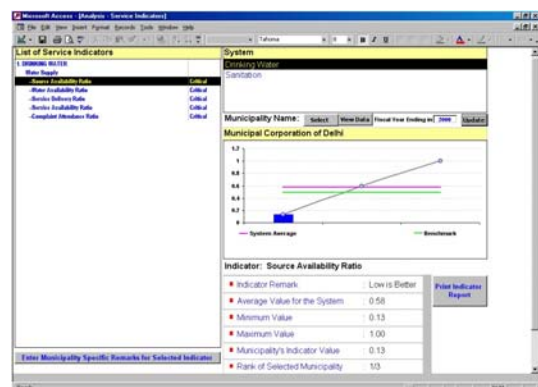
Evalsys™ uses a set of performance measuring indicators (PMIs) to analyze various aspects of service delivery at an ULB. PMIs are defined as a measuring scale derived from various parameters, which provide information about the state of a phenomenon relating to managerial, technical, environmental, financial and social aspects of service delivery of an ULB.

Potential benefits of Evalsys™ for an ULB are:

- ▶ design an effective framework for relating inputs to outputs,
- ▶ identify critical areas for efficient resource allocation,
- ▶ identification of strengths and weaknesses in critical areas of service delivery, and
- ▶ prioritization of goals and objectives for ULB.

The key features of Evalsys™ are:

- ▶ delivers computerized performance measurement systems,
- ▶ generates concise and clear environmental performance reports,
- ▶ improves ULB's profitability by highlighting financial performance,
- ▶ measures and benchmarks service delivery, and
- ▶ supports social and environmental management decision analysis.



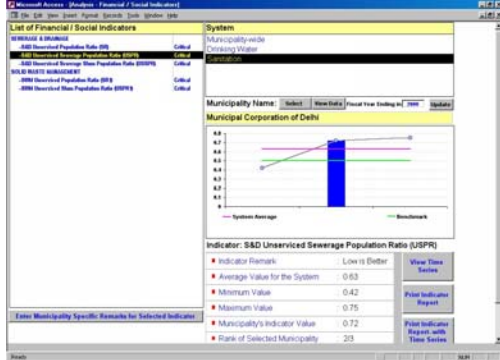
Evalsys™ helps organizations maximize management efficiency benchmarking, compliance management and strategic disclosure.

Various analytic features of Evalsys™ are:

- ▶ supports management decision analysis,
- ▶ can improve organizational profitability by improving performance,
- ▶ delivers computerised performance measurement systems

- ▶ measures and benchmarks organizational performance on pre-selected key parameters
- ▶ produces computerised reporting for compliance assurance and internal management
- ▶ generates concise and clear project performance reports

Evalsys™ provides decision makers with strategies for making cost effective performance improvements and benchmarking.

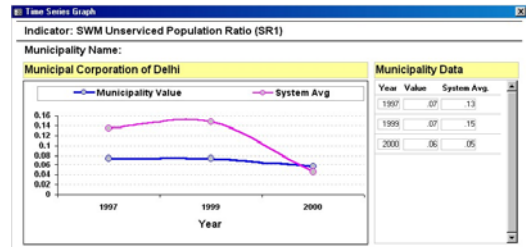


Evalsys™ provides decision makers with a strategic planning tool for making cost effective improvements and benchmarking service delivery against best performers in the arena. When a ULB monitors performance and evaluates a system, it tends to study the processes and process improvement techniques of a second ULB. The basic objective of the ULB is to improve the efficiency of the existing service delivery and introduce new cost effective measures and processes.

Evalsys™ can help strengthen ULB's model code of service delivery through analysis of PMIs in four basic stages necessary for the

design and implementation of the performance monitoring and evaluation activity in any ULB.

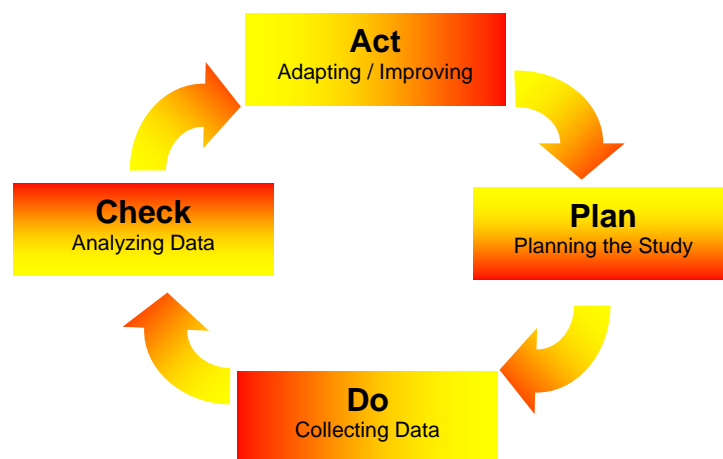
Each stage is crucial in the decision-making cycle as depicted. It requires commitment of the top management at all points to match resource availability with fiscal resources, adaptation and improvement with efficiency and accountability.



Evalsys™ can be fully customized as per the typical requirements of any ULB. Evalsys™ is a versatile package that helps in conducting an in-depth analysis and offers to compare ULBs based on various performance level parameters as well as offers a unique feature - capability to perform a time series analysis of data.

Evalsys™ has been comprehensively designed and developed in-house and is flexible in design. Evalsys™ can be run as a stand alone product as well as a web enabled product thereby providing it the capability of remote input / output of data and analysis.

Evalsys™ has been made in MS-Access 2000 for both its front-end application as well as the back-end database tables using Forms, Queries and the Reports options available.



IRG Systems South Asia Pvt. Ltd.  
 BC - 10 & 11, Highway Tower - 1,  
 Sector - 62, NOIDA,  
 Uttar Pradesh  
[www.irgssa.com](http://www.irgssa.com)