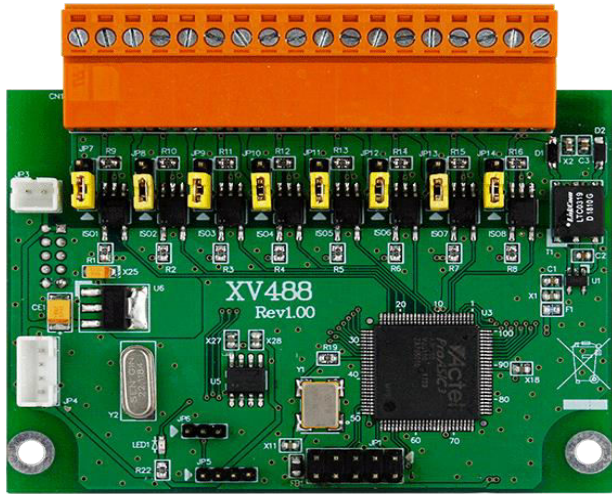


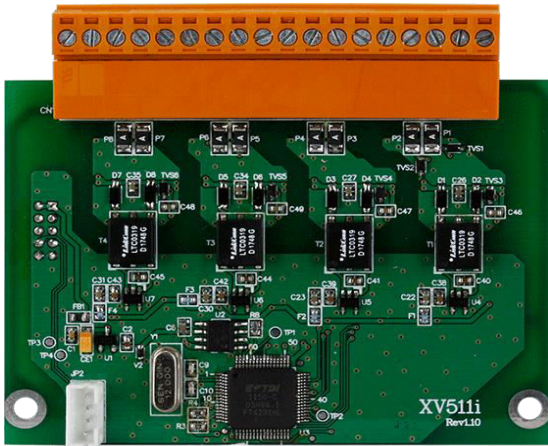
PWM Output and RS-485 Expansion Board



PWM Output Expansion

Model	PWM Output	Load Voltage	Maximum counting rate	Channel	Type	Sink/Source
XV488	Internal Power External Power	+5 VDC +3.5 ~ +50 VDC	500 kHz	8	PWM	Sink, Source Sink

RS-485 Expansion Board



RS-485 Expansion

Model	Type	Channels	Speed
XV511i	RS-485	4 Channels (Data+, Data-)	921.6 K

Note : XV511i Supports UA-2241M/WP-2241M-CE7/LP-2241M Only.