



Excellent imaging performance

- Sony professional CMOS sensor
 - 6 megapixel sensor-IMX178
 - Sensor Size-1/ 1.8"
 - Pixel Size-2.4x2.4μm
 - Resolution -3072 x 2048

ISP color-interpolation algorithm

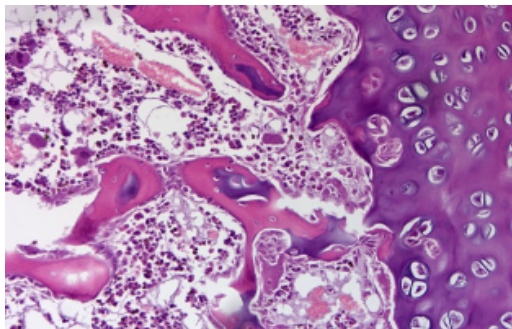
Effectively improve the color deviation of the sensor
Perfectly restore the true color of the sample

USB3.0 Stable high-speed transmission

Simple and convenient while ensuring a stable rate
At full resolution, 35 fps rapid imaging can be achieved

Supports 4 Cameras Simultaneously

Automatic matching data bandwidth algorithm
Achieve the state of 4 cameras running synchronously



Revolutionary imaging software

From the user's point of view, redefining the image acquisition - editing - measurement - report output workflow process. The inclusion of Tucsen's latest image processing algorithm, effectively improving productivity.



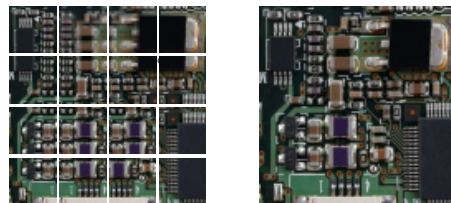
Real-time depth-of-field fusion

Which produces perfect results just by switching the depth



Real-time image stitching

Which can generate mosaic images while moving the stage.



Michrome 6 specification

| | |
|-----------------------|---|
| Product Model | Michrome 6 |
| Sensor Model | IMX178LQJ-C |
| Sensor Type | CMOS |
| Sensor Size | 1/1.8" |
| Color/Mono | Color |
| Pixel Size | 2.4 x 2.4(μm) |
| Resolution | 3072(H) x 2048(V) |
| Frame | 40fps @6MP |
| Shutter Mode | Rolling |
| Exposure Time | 0.13ms-15s |
| Automatic Set | Exposure, Color Scale, White Balance |
| Manually Set | Exposure, Gain, Noise Reduction, Gamma, Flat Field Correction |
| Color Temperature | 2000-15000K |
| ADC Depth | 12Bit |
| PC Software | Mosaic V 2.0 |
| Picture Format | JPG / PNG / TIFF |
| Operating System | Windows / Linux / Mac |
| Multiple Cameras | Supports 4 Cameras Simultaneously |
| Data Interface | USB 3.0 |
| Optical Interface | Standard C Mount |
| Camera Size | 68 x 68 x 46 mm |
| Camera Weight | 330 g |
| Operating Temperature | 0-60°C |

Michrome 6 appearance

- Meticulous CNC arc processing
- Environmental protection spraying
- Stainless steel C ring with no debris

Mosaic V 2.0 software feature function

| |
|--|
| Intelligent 12-bit ISP color reproduction |
| Real-time depth of field fusion |
| Real-time image stitching |
| Real-time fluorescence image synthesis and editing |
| HDR image synthesis |
| Micro-imaging-based intelligent automatic exposure |
| Smart measurement workflow |
| Implements multiple iterations of workflow execution |
| Supports single shot, integral camera, delayed camera |
| Automatic video and delay video generation |
| Output format selection |
| User parameter group save and load |
| Dynamic \ static measurement, layered measurement |
| Supports measuring gauges, layers, precision, naming, style |
| Implements drawing: points, lines, rectangles, polygons, circles, arcs, angles |
| Data export as TXT or Excel |
| Report generation and printing |



Contact Information