



# SC-60+

## Hematology Analyzer



Next Sample

Blood Mode  
 Venous Blood  Capillary  Prediluted

Sample  
Sample Prefix: \_\_\_\_\_ Sample ID: 1

Patient Info.  
Name: \_\_\_\_\_ Gender: \_\_\_\_\_

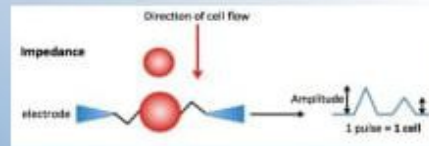
10 inches large display with capacitive touch screen.  
Clear display of all parameters results with three histograms in colors.  
Access to detailed results of both parameter and histograms.  
Wired or wireless keyboard and mouse supported.  
Daily results also on display.

More option in patient data entry like, birthday, department, Bed No., Referred by, sample type, submitter, Medical no., remarks etc.  
Different Age groups, users, months

Accurate Results, stable and reliable SC-60+ works on Electric Impedance method which is best principle to measure blood cell count.

Cell particles guide, accurate signals reflect the size of the cells. PLT simulation curve, reduce the influence of RBC with PLT counting.

External wide power supply and anti-interference components make the machine more stable and reliable.



Very sensitive hardware check program, like self check, all board (Altera Corporation, USA) voltages, valves check etc., help engineer to rectify the problem in minimum time.



High performance Dual Chamber with steel body cover to prevent dust



High performance Quadra PTFE liquid syringe



High performance Quadra PTFE waste/pressure syringe



Electromagnetic Solenoid Valves from world famous brand - SMC, Japan for better pressure control & flow

## Technical Parameters

### Serachem SC-60<sup>+</sup> Hematology Analyzer



3/4

#### SPECIFICATIONS

Throughput\*  
60 samples/hour

\* Throughput performance is achievable in optimized conditions with an admitted margin for variation of 10%.

Sound Pressure Level  
< 60 dBA

Operating Temperature & Humidity  
16 to 30°C (61 to 86°F) room temperature.  
Maximum relative humidity 85% for temperature up to 30°C (86°F)

Specimen Volume:  
CBC + 3 part DPT 10 µL and Pre dilution 30 µL

Power Requirements:  
Power supply Adapter Power Supply

Reagents:  
- Serachem Lysc  
- Serachem Diast  
- Serachem Ckl Green

#### METHODS & TECHNOLOGIES

#### SOFTWARE

16.0" Color LED screen  
Operating system: LINUX  
Inverter card for LED screen  
Touch screen technology  
With external mouse & keyboard  
Store thermal printer with rapid paper loading  
Storage: 50000 samples with histograms & patient information

#### PARAMETERS & PERFORMANCE DATA

##### Z1 Parameters:

WBC	RBC	MCH	PLT
LYM & LY% <sup>†</sup>	HGB	MDMC	MPV
MDA & MD% <sup>†</sup>	HCT	RDW-CV	RDW-SD
GRAN & GRAN%	MCV	PDW <sup>†</sup>	P-LCR
			P-LCC

##### Linearity:

Parameters	Linearity Limit	Stable Range
WBC	0 - 150 x 10 <sup>9</sup> /mm <sup>3</sup>	100 - 150 x 10 <sup>9</sup> /mm <sup>3</sup>
RBC	0 - 8 x 10 <sup>12</sup> /mm <sup>3</sup>	8 - 16 x 10 <sup>12</sup> /mm <sup>3</sup>
HGB	0 - 26 g/dL	20 - 30 g/dL
HCT	0 - 80 %	80 - 90%
PLT (Whole blood)	0 - 2200 x 10 <sup>9</sup> /mm <sup>3</sup>	2200 - 6000 x 10 <sup>9</sup> /mm <sup>3</sup>



10 inches large display with capacitive touch screen.  
 Clear display of all parameters results with three histograms in colors.  
 Access to detailed results of both parameter and histograms.  
 Wired or wireless keyboard and mouse supported.  
 Daily results also on display.

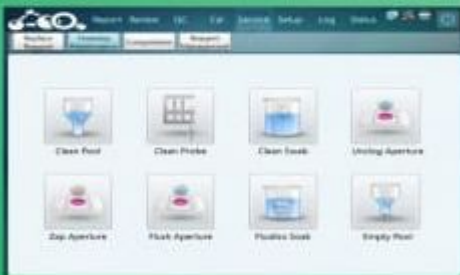
2/4

The 'Next Sample' form includes the following fields and options:

- Blood Mode:** Venous Blood (selected), Capillary, Prediluted
- Sample:** Sample Prefix, Sample ID (1)
- Patient Info:** Name, Gender, Age (year), Dept., Bed No., Ref Group (General), Sam. Type, Submitter, Medical NO., Remarks

Buttons: OK, Cancel

More option in patient data entry like, birthday, department, Bed No., Referred by, sample type, submitter, Medical no., remarks etc.  
 Different Age group - years, months, days and hours.  
 Three sample mode -  
 Venous - 10µl  
 Capillary - 10µl  
 Prediluted - 20µl



Convenient for maintenance, safe and environment friendly  
 3 doors design, convenient for maintenance.  
 Complete self-test function, automatic pipeline washing during start-up and shut-down to ensure good status for the machine.  
 Multiple ways to prevent blocking to ensure the smoothing of the pipelines.

Reagent	Lot No.	Exp. Date	Volume	Unit	Quantity
Lyse	20120111	2016/03/31	10	20120111	10000.00
Lyse	20120111	2016/03/31	10	20120111	10000.00

Automatic Reagents Monitoring RFID cards for both diluent and lyse solution.  
 No need to enter manually the LOT, EXP, and Volume of the reagents.  
 Cyanide Free Lyse reagent.