

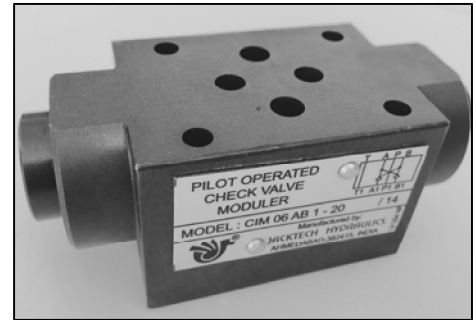


PILOT OPERATED CHECK VALVE MODULAR CONSTRUCTION CIM 06

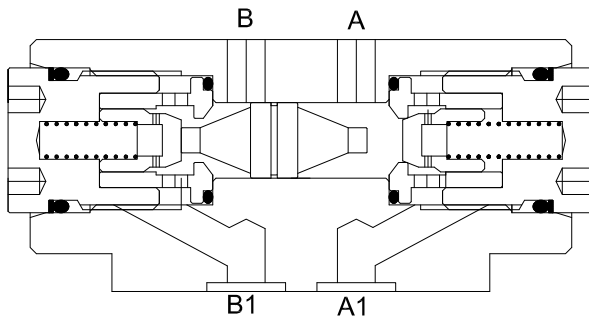
Description

These modular valves are available with the pilot operated check valve facility on either A or B or both A & B ports. The hydraulics opening operation for free flow in reverse direction is achieved by means of internal pilot pressure available from the other working port.

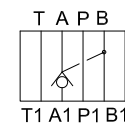
To ensure proper closure of both valve poppets, both user connections should be unloaded when the control valve is in the neutral position by connecting with the return line.



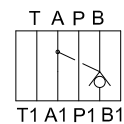
Section



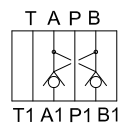
Hydraulics Symbol



CIM 06 A

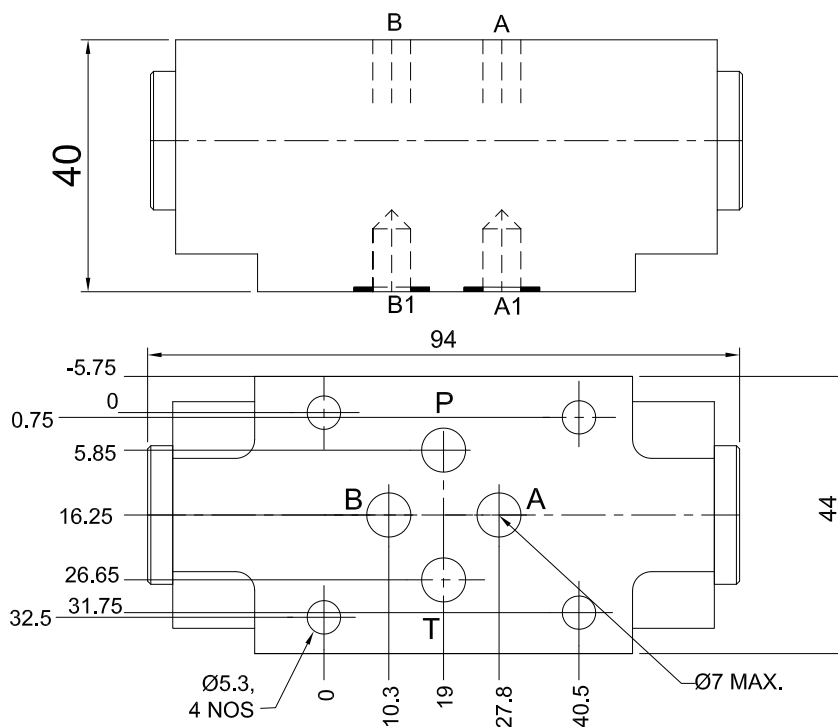


CIM 06 B



CIM 06 AB

Unit Dimensions



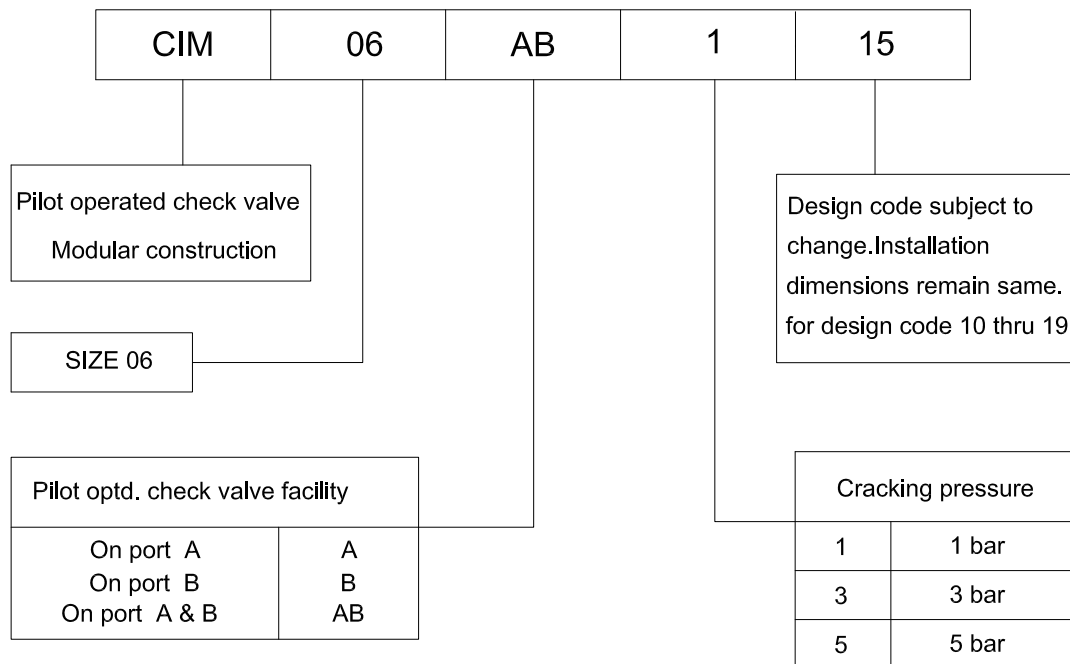


**PILOT OPERATED CHECK VALVE
MODULAR CONSTRUCTION
CIM 06**

Technical specification

Construction	Modular, seat type, internally pilot operated
Mounting	Modular type , conforming to IS 10187 ISO 4401-AB-03-04-A DIN 24340
Mounting position	Optional
Direction of flow	Free flow from A to A1 and/or from B to B1 Piloted open flow in opposite direction.
Operating pressure	315 Bar for all ports
Cracking pressure	1 , 3 & 5 bar
Area ratio-pilot piston:poppet seat	2.6 : 1
Viscosity range	10 cSt to 380 cSt.
Fluid temperature range	-10°C to +80°C
Nominal flow handling capacity	35 L/min
Mass	0.86 kg

Ordering code





PILOT OPERATED CHECK VALVE MODULAR CONSTRUCTION CIM 10

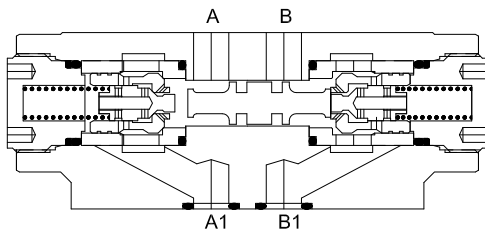
Description

These modular valves are available with the pilot operated check valve facility on either A or B or both A & B ports. The hydraulics opening operation for free flow in reverse direction is achieved by means of internal pilot pressure available from the other working port.

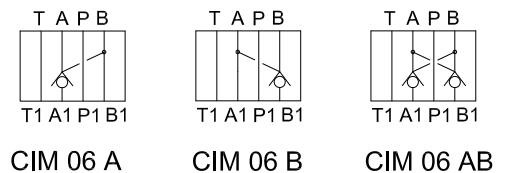
To ensure proper closure of both valve poppets, both user connections should be unloaded when the control valve is in the neutral position by connecting with the return line.



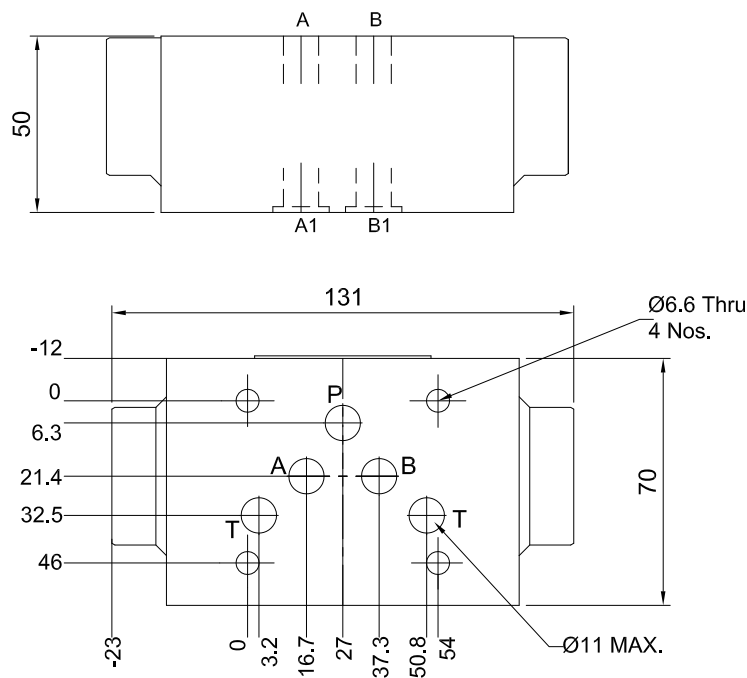
Section



Hydraulics Symbol



Unit Dimensions





**PILOT OPERATED CHECK VALVE
MODULAR CONSTRUCTION
CIM 10**

Technical specification

Construction	Modular, seat type, internally pilot operated
Mounting	Modular type , conforming to IS 10187 ISO 4401-AB-03-04-A DIN 24340
Mounting position	Optional
Direction of flow	Free flow from A to A1 and/or from B to B1 Piloted open flow in opposite direction.
Operating pressure	315 Bar for all ports
Cracking pressure	1 , 3 & 5 bar
Area ratio-pilot piston:poppet seat	4 : 1
Viscosity range	10 cSt to 380 cSt.
Fluid temperature range	-10°C to +80°C
Nominal flow handling capacity	80 L/min
Mass	2.05 kg

Ordering code

