



**Directional Control Valve
With hand Lever Operation**

ENGINEERING 2/4

Y02501/09.03

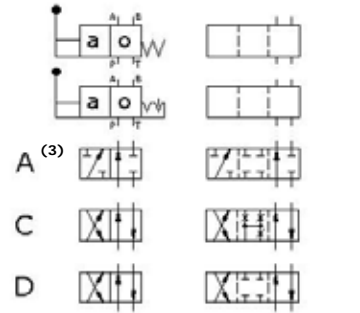
Size 06

315 bar

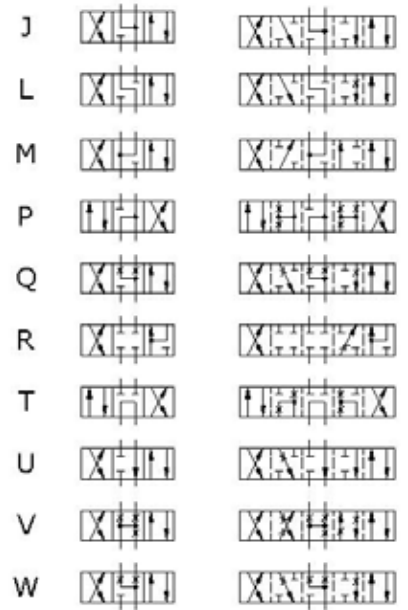
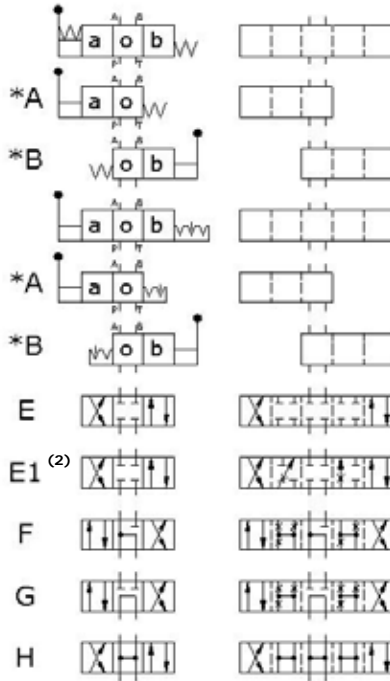
60 lpm

Spool Types

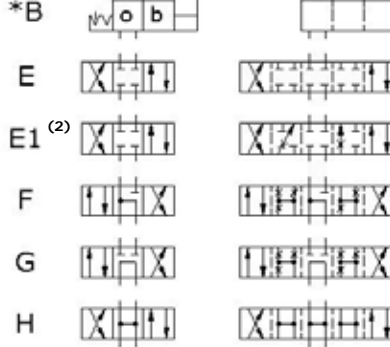
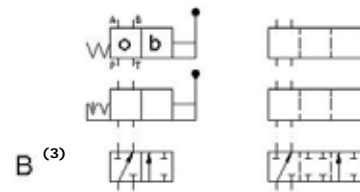
4/2 Way Valve with "o" and "a" positions



4/3 Way and 4/2⁽¹⁾ Way Valve



4/2 Way Valve with "o" and "b" positions



Note:

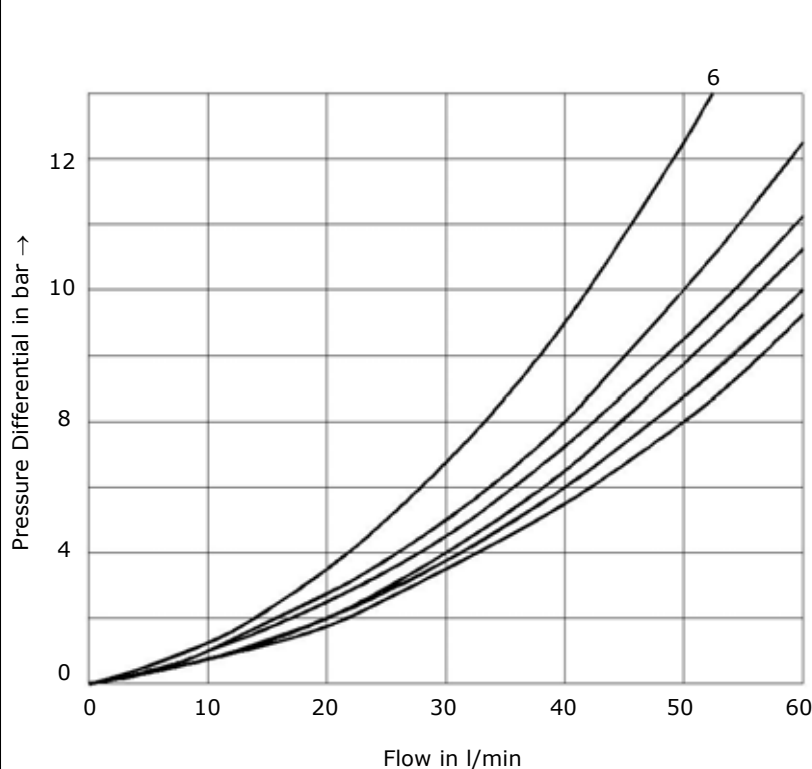
⁽¹⁾ When ordering a spool with only two positions "o" and "a" or "o" and "b", specify the desired position "A" or "B" in model code.

⁽²⁾ Please check the possibility of cylinder intensification

⁽³⁾ For spool type A and B. Port T must be used as drain line

Example: E Spool with "o" and "a" position—4DE10EA220A-01

Characteristic Curves



Spool Type	Direction of Flow				
	P→A	P→B	A→T	B→T	P→T
A	3	3	-	-	-
B	3	3	-	-	-
C	3	3	4	1	-
D	3	3	4	1	-
E	2	2	4	4	-
F	2	2	2	2	-
G	6	6	6	6	5
H	2	2	1	1	3
J	2	2	1	1	-
L	2	2	1	4	-
M	2	2	4	4	-
P	2	2	2	2	-

Pressure differential measured with ISO VG46 oil at 40°C ±10°C



**Directional Control Valve
With hand Lever Operation**

ENGINEERING 3/4

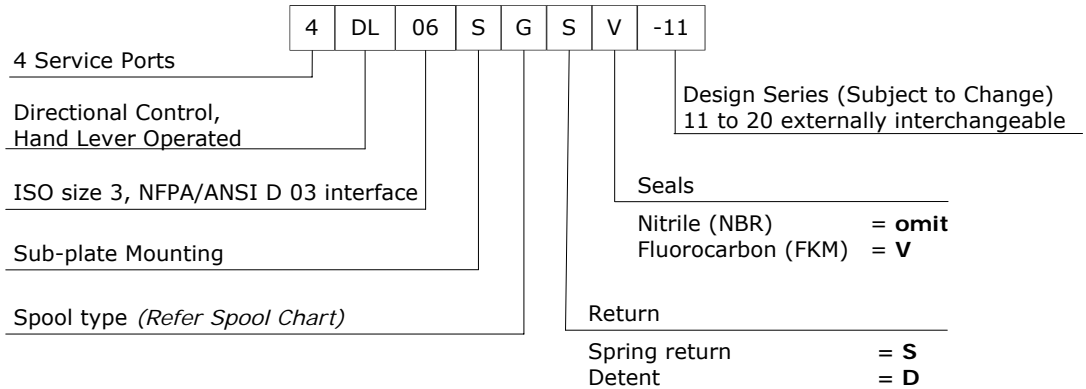
Y02501/09.03

Size 06

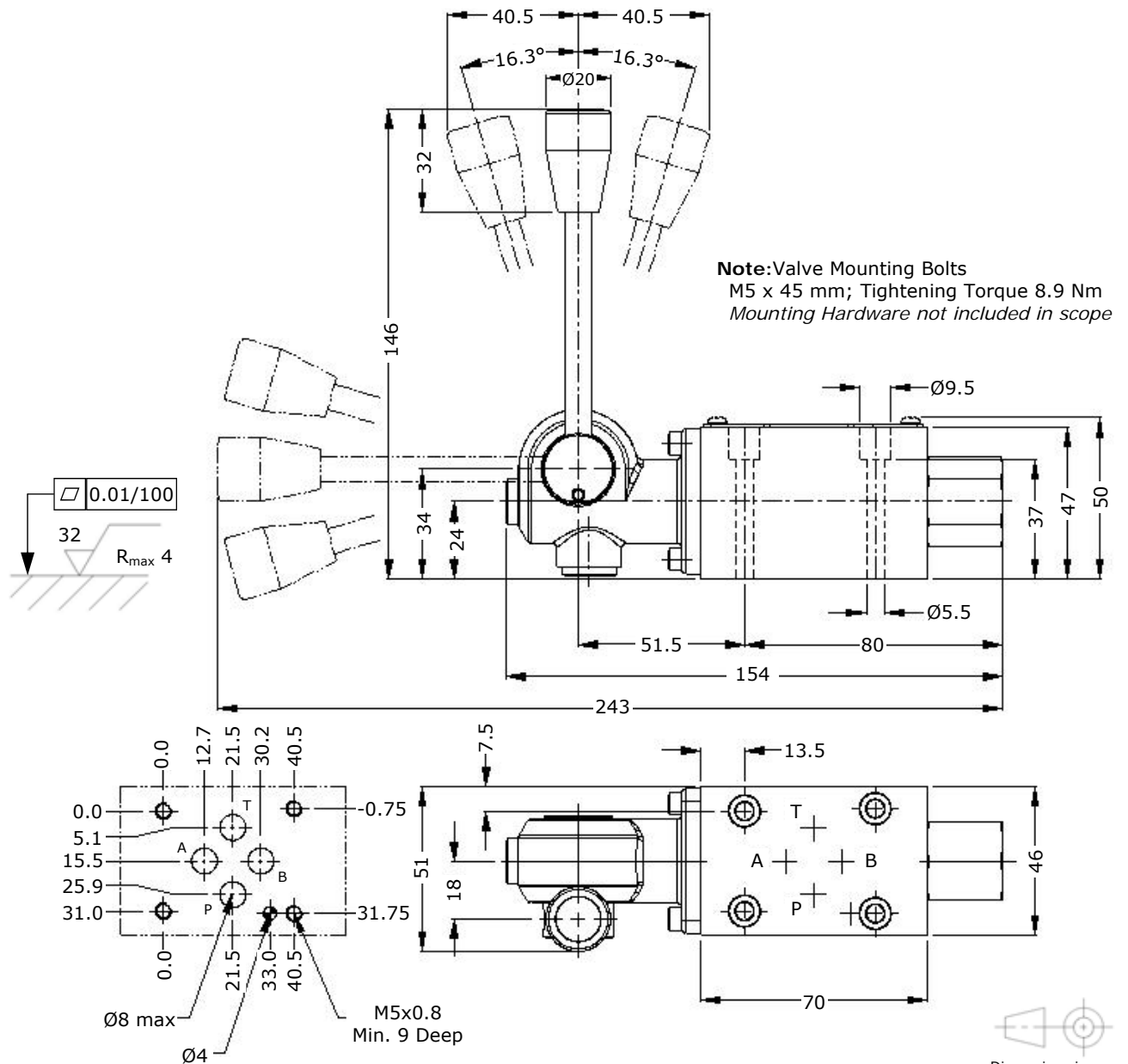
315 bar

60 lpm

Ordering Code



Installation





**Directional Control Valve
With hand Lever Operation**

ENGINEERING

4/4

Size 06

315 bar

60 lpm

Y02501/09.03

Notes

A large, empty rectangular area intended for handwritten or typed notes, occupying the majority of the page below the header information.