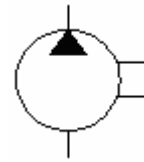
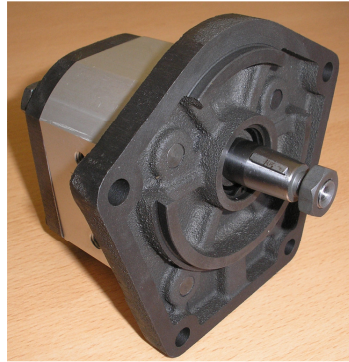


Mahindra & Mahindra Gear Pumps

- High strength aluminum extruded body.
- Hardened and ground integral gear shaft.
- Special aluminum alloy bush bearing.
- Axially balanced for high volumetric efficiency in excess of 95%.



Rating

Graphic Symbol

Model Number	Geometric Displacement		Maximum Pressure Bar		Shaft Speed range rpm		Weight Kg
	cm ³ /rev	LPM @ 1500 rpm	Continuous	Intermittent	Min	Max	
MM-084	8.4	12.6	200	225	600	3500	3.5 (Approx)
MM-120	12.0	18.0	200	225	500	3000	

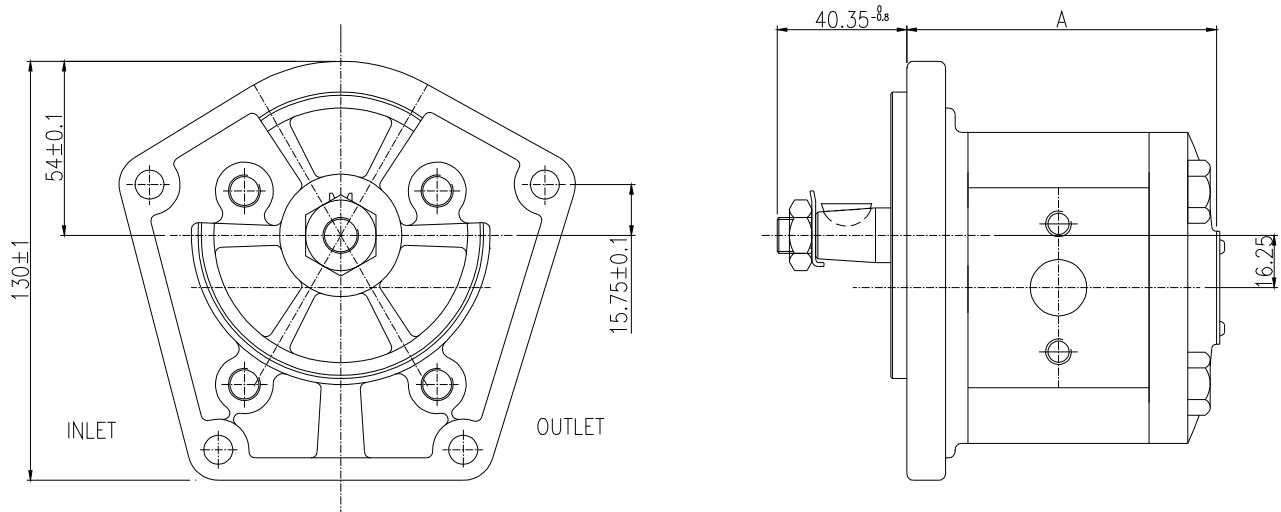
Model Number Designation

MM	-084	-T	-5	-F	-BB	-R
Series	Size	Shaft	Mounting	Port	Drive Shaft Seal	Direction of Rotation Viewed From Shaft Side
MM: Mahindra & Mahindra	084, 120	T:Tapered	5:With a ϕ 88.87 Spigot mounting	F: Flanged Port	BB: Double Nitrile VV: Double Viton	R: Clockwise

Example: - MM-084-T-5-F-BB-R

084: 8.4cc/rev, T: Tapered shaft, 5: ϕ 88.87 Spigot Mounting, F: Flanged port, BB: Double Nitrile, R: Clockwise

General Arrangement

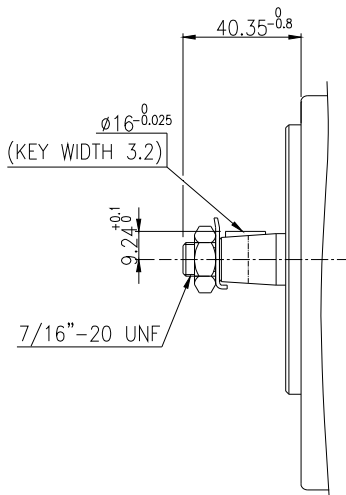


Model	A
MM-084	90.1
MM-120	96.4

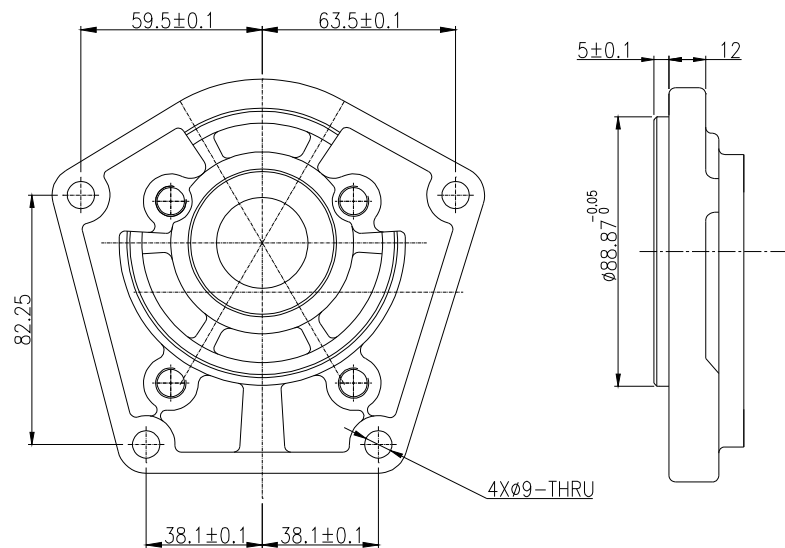
PUMP DETAILS SHOWN FOR CLOCKWISE ROTATION VIEWED FROM SHAFT SIDE

ALL DIMENSIONS ARE IN MM

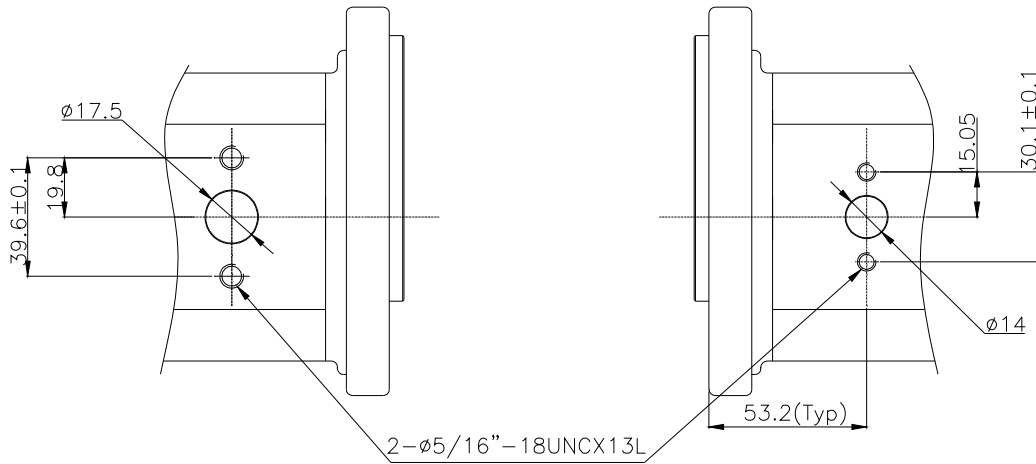
Shaft



Flange



Ports



INLET PORT

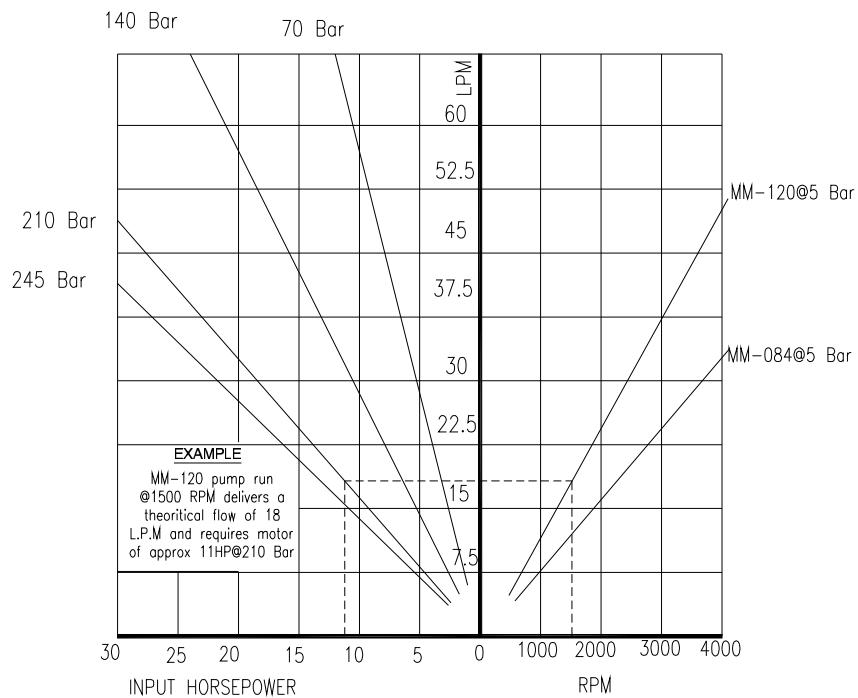
OUTLET PORT

Model	B
MM-084	44.5
MM-120	47.2

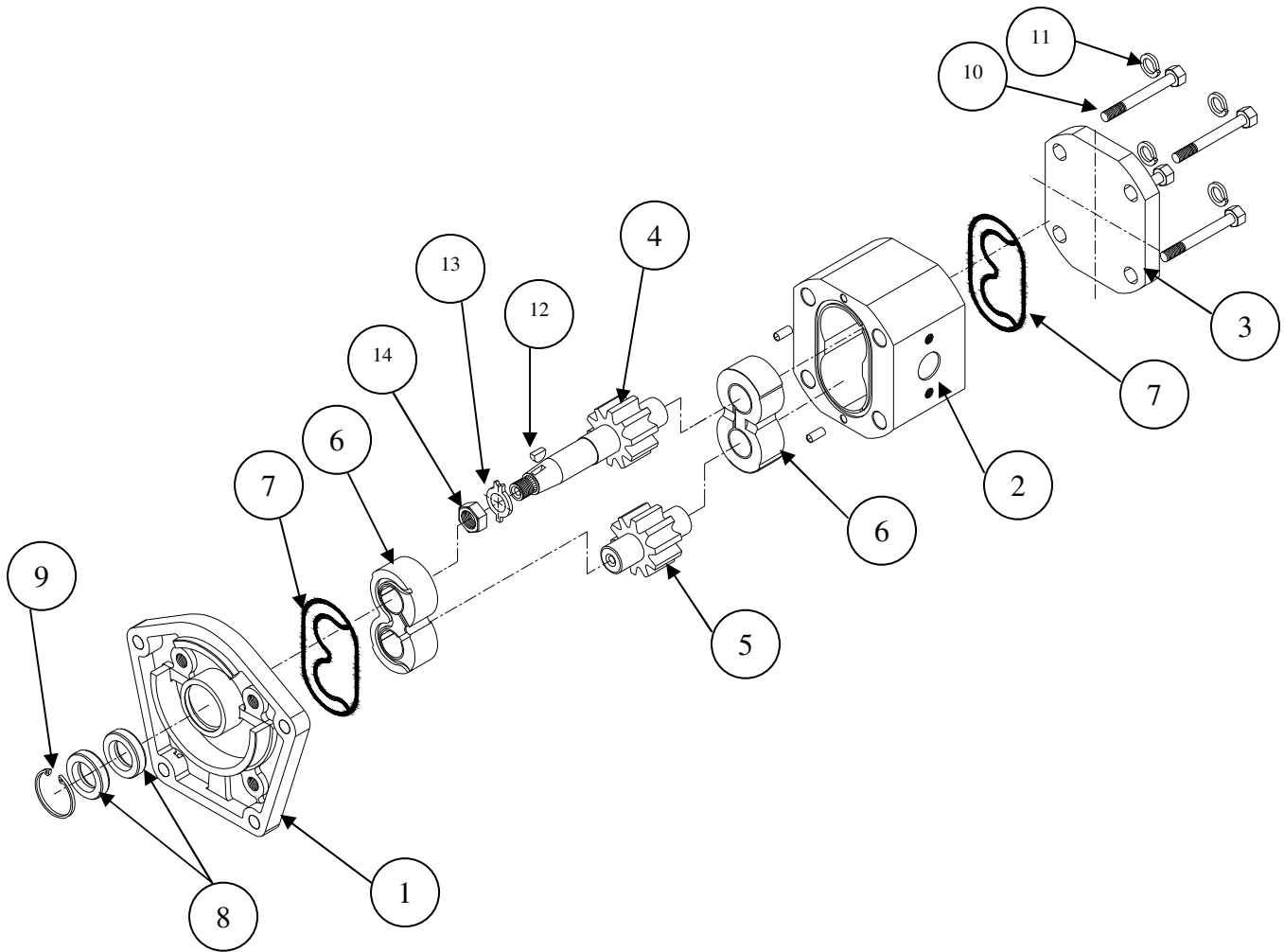
Seals: -

Nitrile (Temp. range: -15°C+80°C),

Performance Chart



M&M-Series Pumps



PART NO	DESCRIPTION	MATERIAL	QTY/ASSE
1	Shaft End Cover	Cast Iron	1
2	Body	Aluminum	1
3	Closed End Cover	Cast Iron	1
4	Driving Gear	Hardened Steel	1
5	Driven Gear	Hardened Steel	1
6	Bearing Bush	Al alloy	1
7	Body End Seal	Nitrile/Viton	2
8	Oil Seal	Nitrile/Viton	1
9	Circlip	Spring Steel	1
10	Bolt	High Tensile Steel	4
11	Washer	Spring Steel	4
12	Woodruff Key	Steel	1
13	Lock Washer	Steel	1
14	Lock Nut	Steel	1