

Superlite®

## SUPERLITE ASBESTOS FREE

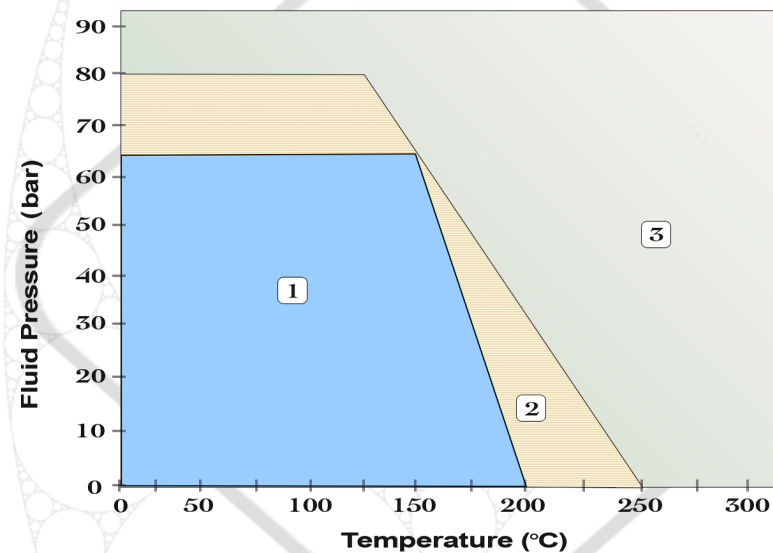
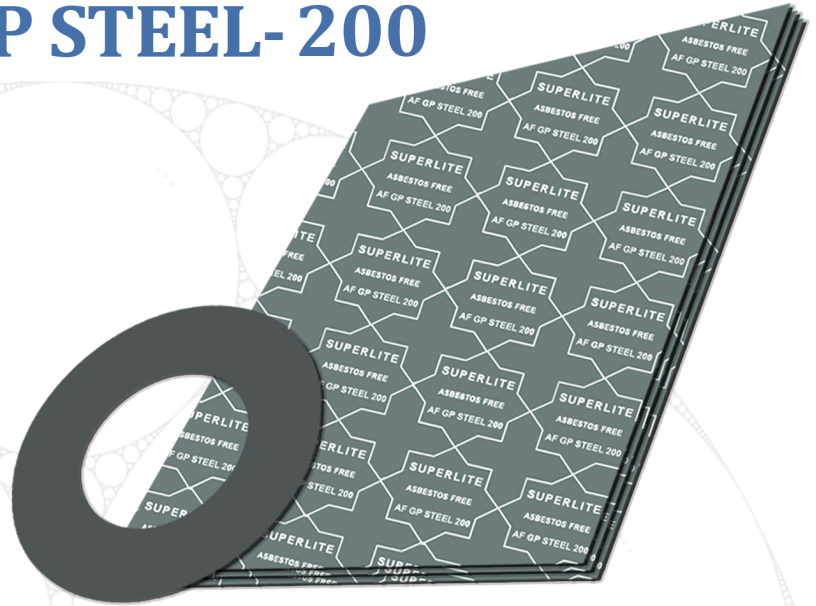
### ▪ Basis

Gasket material based on mineral fibre, organic fibre, inorganic fillers with NBR binder and steel wire reinforced.

### ▪ Application

General purpose metallic grade suitable for medium pressure steam, water, oils, fuels and inert gases for low stress conditions.

## GP STEEL-200



### Dimensions of the standard sheets :

Standard sheet sizes :

1500 X1500 mm, 1500 X2250mm, 1500 X4500 mm ,  
1500 X1000 mm, 1000X1000mm, 1500 X4000 mm,  
1500 X2000 mm, 1300 X3900 mm, 1270 X1270 mm,  
2100 X 3000 mm, 1500 X 3000 mm.

### Areas of application

1. This area refer , the gasket material is normally suitable subject to chemical compatibility.
2. This area refer, the gasket material may be suitable but a technical support is recommended.
3. This area refer, do not install the gasket without technical evaluation.

▪ **Specification : ASTM**

▪ **Finish : G/GR**  
(other Colour on Customer requirement).

## Technical data

All data are typical values and refer to sheet thickness of 2.00 mm

	Test method	Specified Value	Unit
Max. Peak Temperature		250	°C
Max. Operating Temperature		200	°C
Max. Operating Pressure		80	bar
Density	ASTM F 1315	1.70 - 2.0	g/cm <sup>3</sup>
Compressibility	ASTM F 36 J	7 -17.0	%
Recovery	ASTM F 36 J	≥ 40.0	%
Tensile Strength	ASTM F 152	≥ 8.0	N/mm <sup>2</sup>
ASTM oil no.3 (5h, 150°C)	ASTM F 146		
Thickness Increase		≤ 15.0	%
Weight Increase		≤ 20.0	%
Fuel B (5h, 23°C)	ASTM F 146		
Thickness Increase		≤ 20.0	%
Weight Increase		≤ 20.0	%
Water (5h, 100°C)	ASTM F 146		
Thickness Increase		≤ 10.0	%
Weight Increase		≤ 15.0	%
Stress Relaxation (16h X 175°C 2.00 mm)	DIN 52913	≥ 17.0	mpa

All information and recommendations given in this brochure are correct to the best of our knowledge .

However , in view of the wide variety of possible installation and operating conditions one cannot draw the final conclusion in all application cases regarding the behaviour in a gasket joint . Therefore , information can only serve as a guideline.