

ALEWATE[®]

MUGATLAL GROUP

PRE ENGINEERED BUILDINGS

ENGINEERING THE FUTURE



ABOUT US

MUGATLAL GROUP IS ONE OF THE LEADING SUPPLIERS OF STRUCTURAL STEEL & MANUFACTURER OF ROOFING SHEETS SINCE 1959 IN SOUTH GUJARAT.

Mugatlal Group is a reputed name in terms of manufacturing & supply of quality goods from reputed manufacturer in industry like TATA, JSW, ESSAR, JINDAL, etc.

Our founder **MR. VINODLAL MUGATLAL SHAH** started the journey of Mugatlal Group in 1959 as **"Mugatlal Group"**. With support of his son Mr. Nilesh Vinodlal Shah he gradually added few more firms in the group namely **"Mugatlal & Company"** and **"Steel Trading Company"**. Later on his grandson Mr. Monil Nilesh Shah came up with the unique concept in roofing industry as **"Alevate"** Aluminium Roofing Sheet which set the new benchmark in terms of quality and durability of roofing sheets in the industry.

Over a period of time we are gradually adding quality product in our product portfolio to cope up with requirements of prevailing market trends and industrial norms.

**MUGATLAL GROUP**
SINCE 1959

**STEEL**
TRADING COMPANY

ALEVATE[®]

With all due support of our stakeholders, we have started "Alevate Pre-engineered Building" to tackle all structural needs of our esteemed customers. With "APEB" we provide complete solution of design, manufacturing and erection of industrial metal buildings and create a state of the art industrial unit to cater all structural requirements of our esteemed customers.

We offer comprehensive and specialised services in the field of Industrial and Commercial Architectural consultancy.

VISION

- ⊙ To Deliver world class and high quality engineered construction and to provide affordable solutions to our esteemed customers.
- ⊙ To generate profitable, intellectual and economic growth for our company and employees.

MISSION

- ⊙ To Manufacture the PEB by state of the art machines and manufacturing process using best materials.
- ⊙ To Provide cost effective solutions through optimising design by our engineers.
- ⊙ To Execute every project with consistence quality assurance and on time delivery.
- ⊙ To Treat our client with respect and dignity & Communicate with them on time.

VALUES

ETHICAL

TRUST WORTHY

TEAM WORK

PASSIONATE





QUALITY
TRUST
RELIABILITY

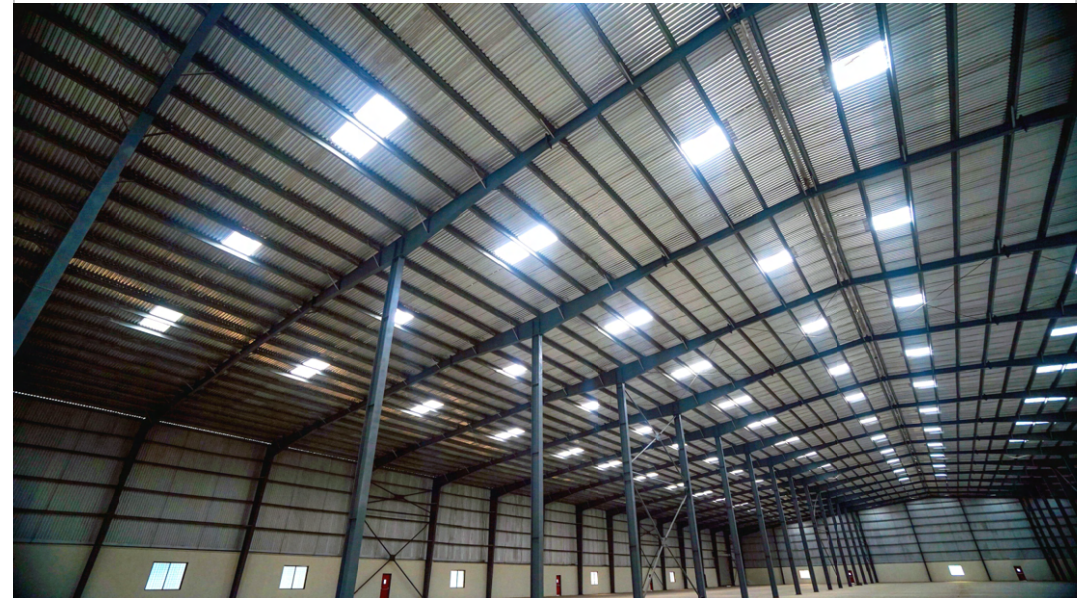
WE BELIEVE IN CREATING A BETTER TOMORROW



WHAT IS PRE ENGINEERED BUILDING

Pre-Engineered Building is an advance concept in terms of designing, manufacturing, erection and making an industrial structure, replacing traditional manufacturing of onsite fabricated sheds. Pre-Engineered Building is seen as a breakthrough in the construction industry, resulting in less construction time, cost-effectiveness, high quality, low maintenance, larger span and many more that meets the growing industrial requirements.

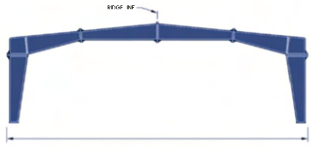
Pre-Engineered Buildings are most versatile industrial and institutional structure that are constructed through inhouse manufacturing facility to fabricate the entire structure in different units and component as per predetermined optimized design using state of the art technology, then transporting, installing & erecting the same at installation site to create an industrial unit that fulfills all structural requirements of concerned customer.



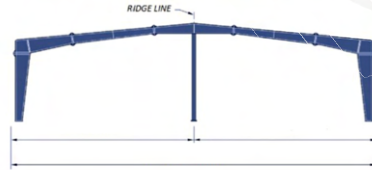
TYPES OF PEB STRUCTURE

TYPES OF PRE-ENGINEERED BUILDINGS

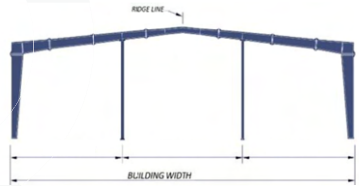
1. CLEAR SPAN



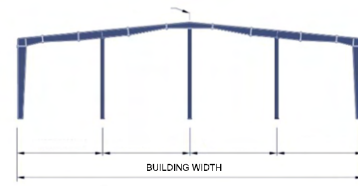
2. MULTI SPAN - 1



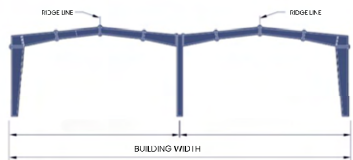
3. MULTI SPAN - 2



4. MULTI SPAN - 3



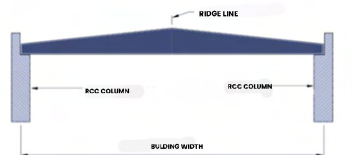
5. MULTI GABLE



6. SINGLE SLOPE



7. LEAN TO WALL - 2

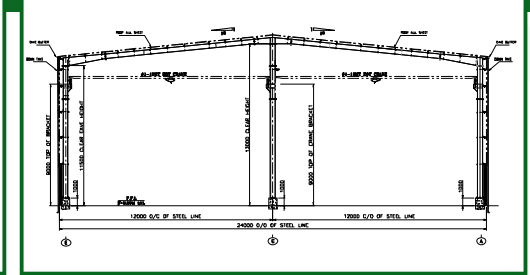
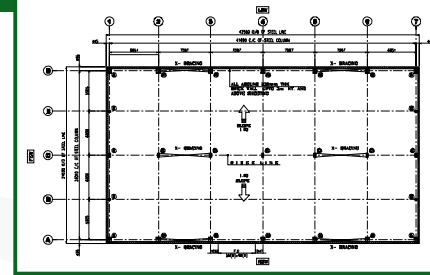


8. LEAN TO WALL - 1

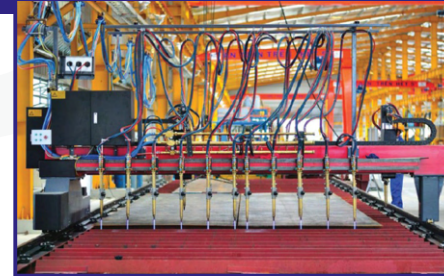


WHAT WE DO !

WE DESIGN



WE MAKE

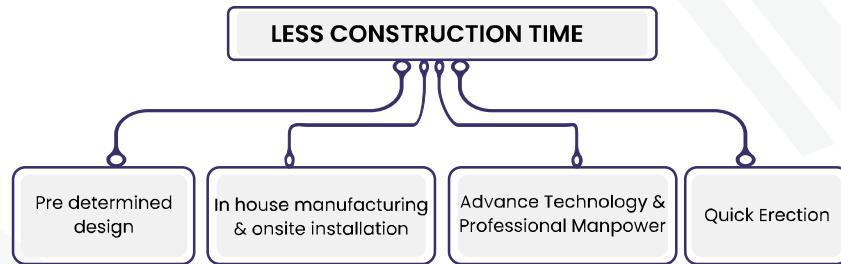


WE ERECT

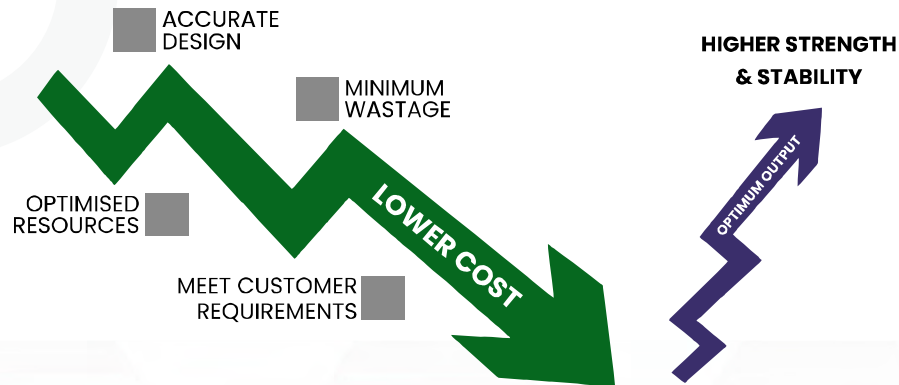


BENEFITS OF PEB STRUCTURE

(1) LESS CONSTRUCTION TIME :



(2) LOWER COST :



(3) LARGE CLEAR SPAN :



PEB Structure

Larger Clear Span Possible

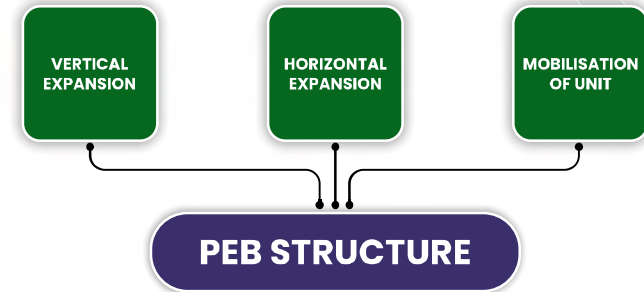
Traditional Structure



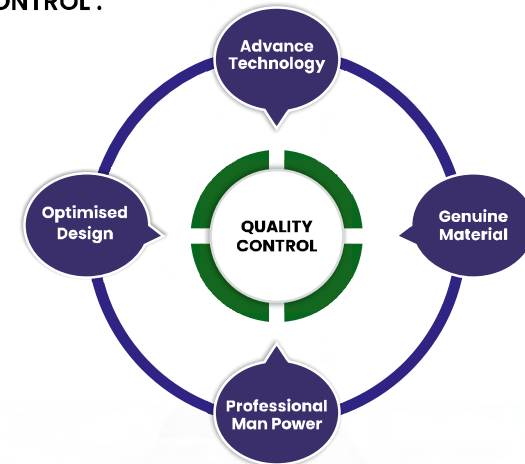
Clear Span Limited To Some Extent Only

BENEFITS OF PEB STRUCTURE

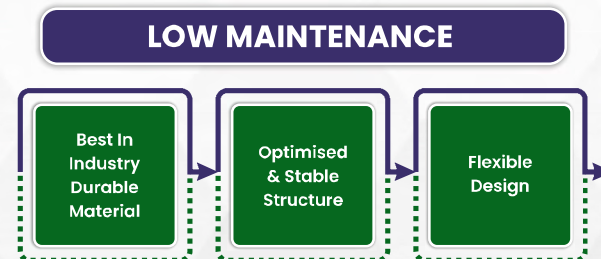
4) FLEXIBILITY OF EXPANSION :



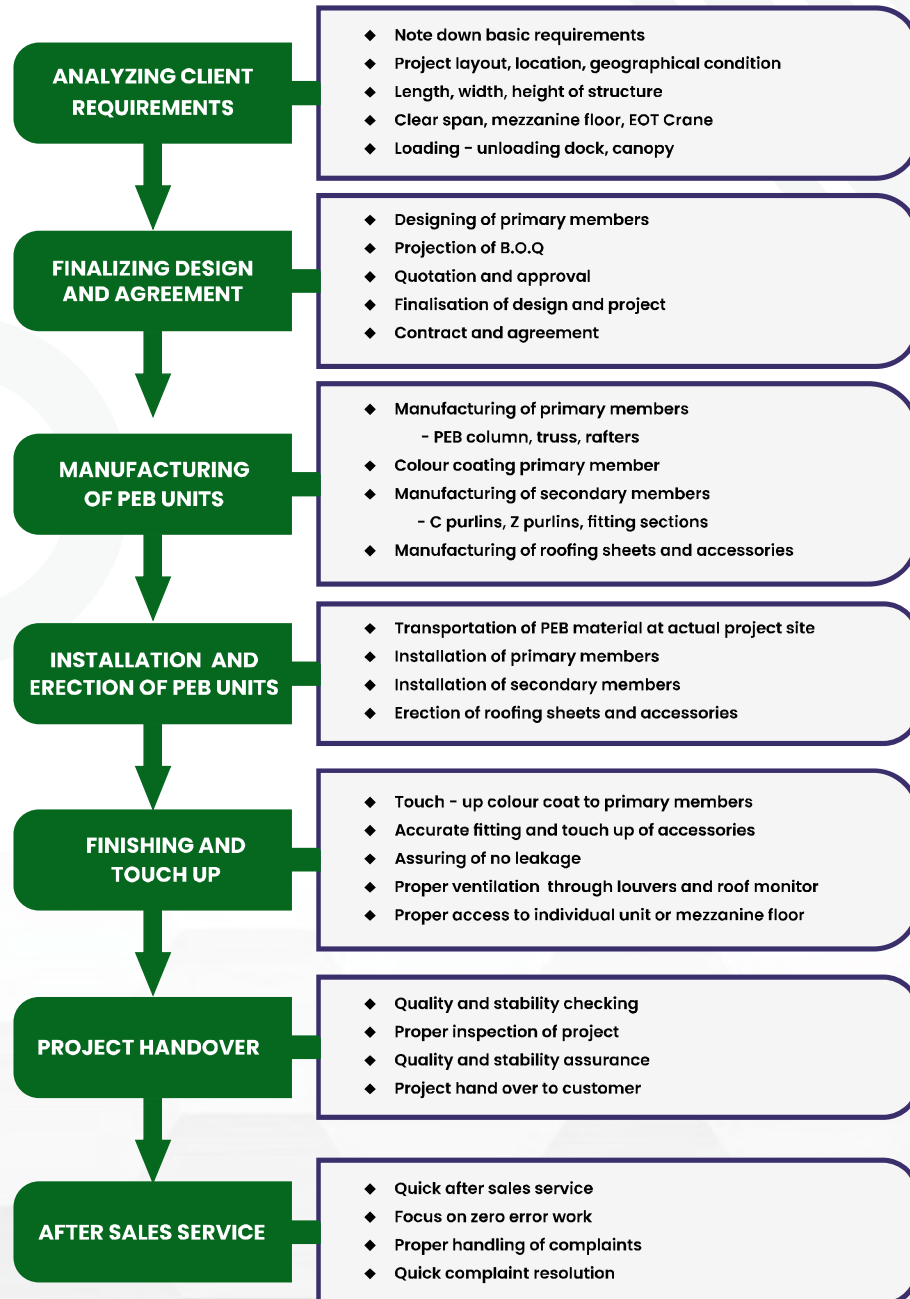
5) QUALITY CONTROL :



6) LOW MAINTENANCE :



OUR WORKING METHODOLOGY



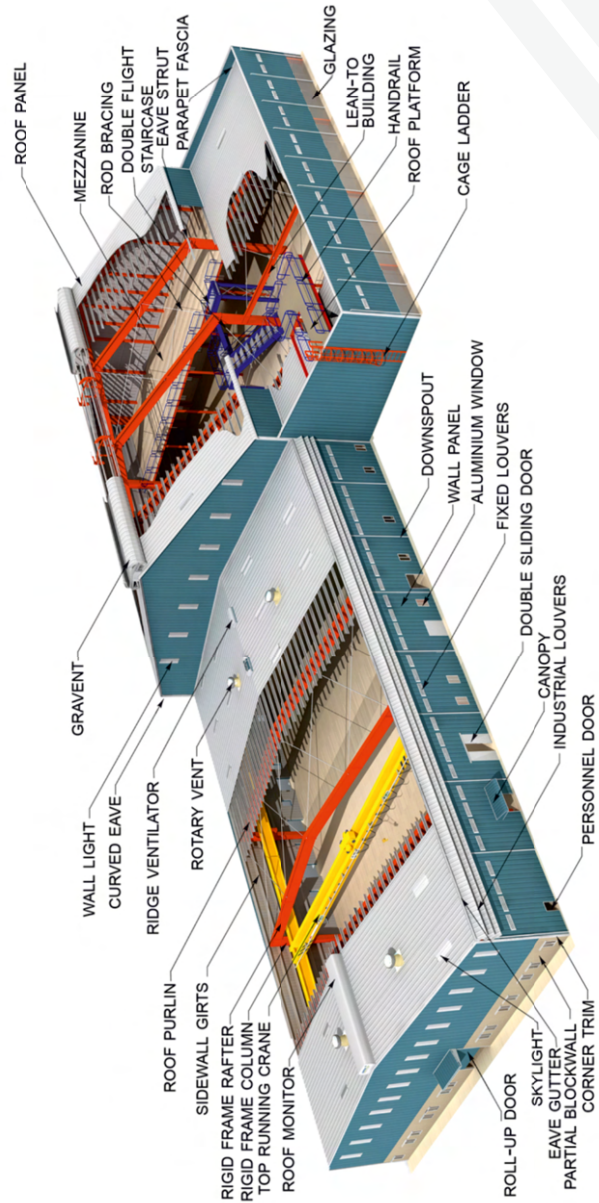
WHY US ?



ALEVATE[®]
PRE ENGINEERED BUILDINGS

DESIGN - MANUFACTURE - ERRECTION

PEB COMPONENTS



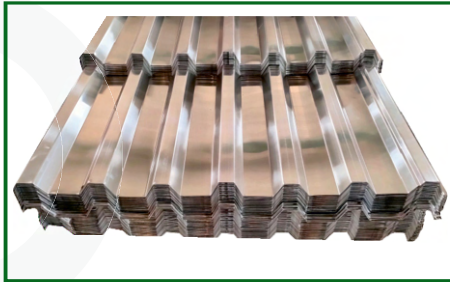
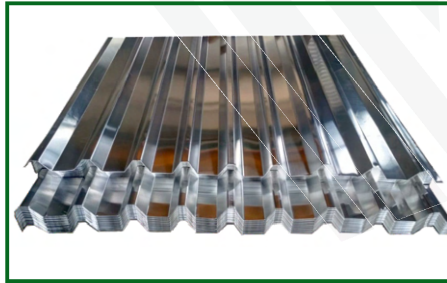
OUR ESTEEMED CUSTOMERS



OUR PRODUCTS AND SERVICES

ALEVATE ALUMINIUM ROOFING SHEERS

- ✪ Trapezoidal design (9 nali)
- ✪ High grade aluminium
- ✪ Width: 3.5 ft
- ✪ Thickness: 0.60, 0.65, 0.71, 0.91 mm
- ✪ Length: customised

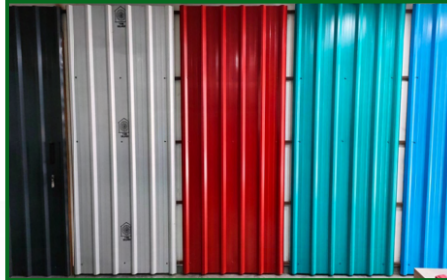


ALEVATE EXTRA STRONG ROOFING SHEETS

- ✪ Hi Crest design (7 nali)
- ✪ High grade aluminium
- ✪ Width: 3.75 ft
- ✪ Thickness: 0.60, 0.65, 0.71 mm
- ✪ Length: customised

COLOUR COATED ROOFING SHEETS

- ✪ PPGL / PPGI Roofing sheets
- ✪ Make: TATA BSL, JSW, ISC, AM/NS
- ✪ Width: 3.5 ft / 4.2 ft
- ✪ Thickness: 0.40, 0.45, 0.50, 0.60 mm
- ✪ Length: Customised



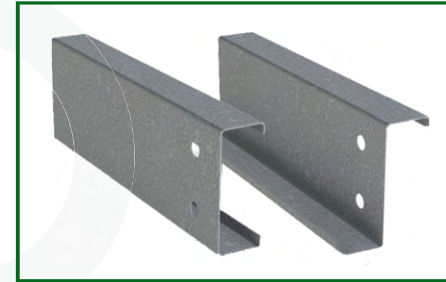
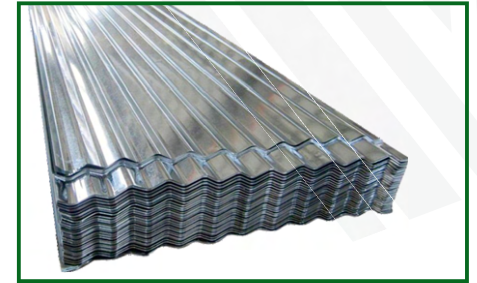
BARE GALVALEUM ROOFING SHEETS

- ✪ BGL Roofing Sheets
- ✪ Make: TATA BSL, JSW
- ✪ Width: 3.5 ft
- ✪ Thickness: 0.47 mm
- ✪ Length: Customised

OUR PRODUCTS AND SERVICES

GLAVANIZED CORRUGATED ROOFING SHEETS

- ✪ GC Roofing Sheets
- ✪ Make: ISC, TATA BSL, JSW, AM/NS
- ✪ Width: 3 FT, 4 FT
- ✪ Thickness: 0.25, 0.30, 0.40, 0.50, 0.60 mm
- ✪ Length: Customised

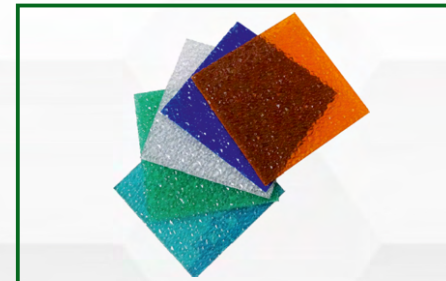
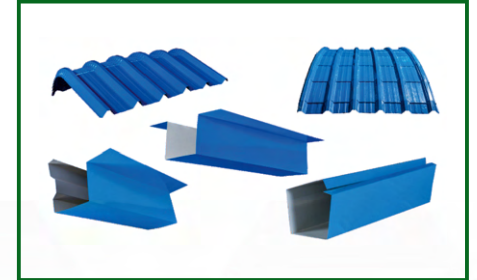


C & Z PURLINS (GI)

- ✪ Galvanised Purlins
- ✪ Make: JSW, AM/NS, APOLLOW
- ✪ Thickness: 1.60, 2.00, 2.50, 3.00 mm
- ✪ Size: 150mm, 200mm, 250mm, 300mm
- ✪ Length: Customised

ROOFING ACCESSORIES

- ✪ Gutter, Ridge, Corner flashing
- ✪ Material: Aluminium, GI
- ✪ Size: Customised



POLYCARBONATE SHEETS

- ✪ Polycarbonate Sheets
- ✪ Width: 3.5 ft / 4.2 ft
- ✪ Thickness: 1.20, 1.50, 1.80 mm
- ✪ Length: Customised



MBS Aluminium Industries Pvt. Ltd.

An ISO 9001:2018 Company

HEAD OFFICE

Nr. Krishna Petrol Pump, Udhna Main Road, Surat 395 002, Gujarat.

VAPI OFFICE

E-14/15, M Cube Business Hub, Balitha, Vapi - 396 145

SACHIN FACTORY

Plot No. 605, Gate No.1, Nr. Police Station, GIDC Sachin, Surat, Gujarat.

ANKLESHWAR FACTORY

Plot No. 2900/155, Indochem Compound, Nr. Atul Ltd., GIDC Ankleshwar - 393 001.

SALES & MARKETING

+91 95129 53830 | +91 99042 24089

Email: info@mbsaluminium.com | www.alevate.in