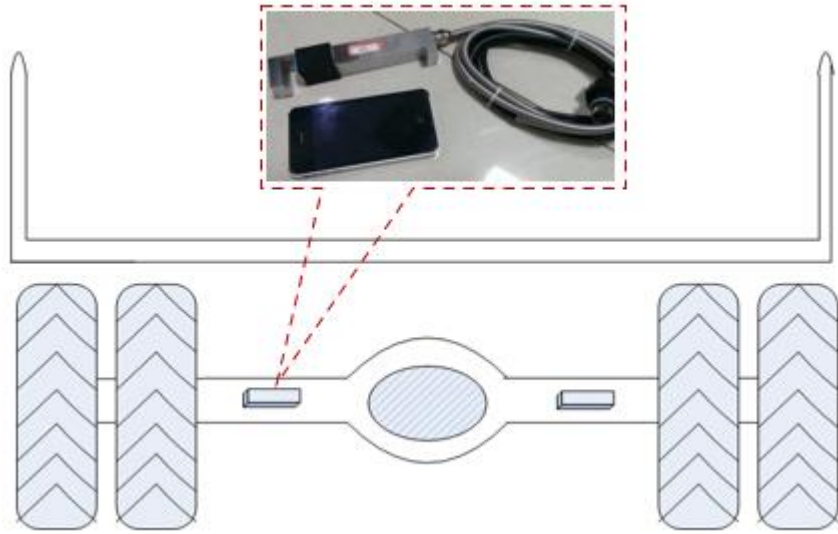
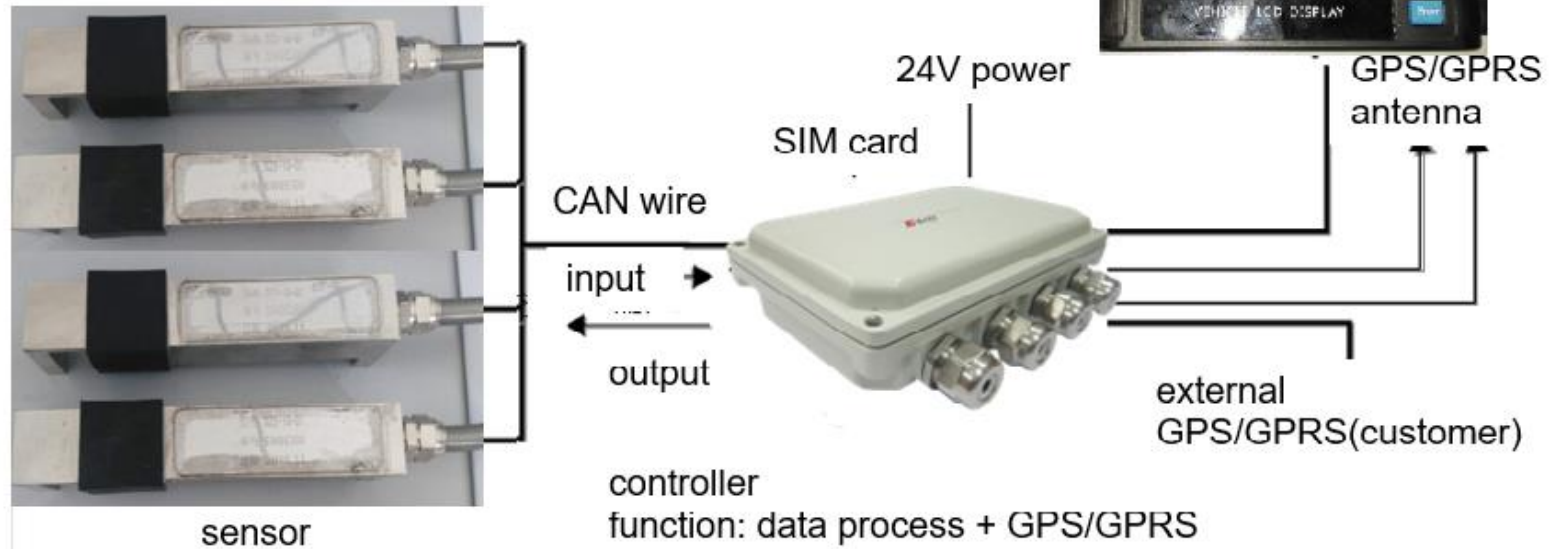


# Strain gauge Based on Board Truck Scale for Trucks with any no of Axles



- accuracy:  $\pm 10\%$  F.S
- rated load:
  - total load: same with approved load, no limit
  - axis load:  $\leq 30T$
- Applicable scope: different kinds of truck with load
- working Temperature:  $-20-70^{\circ}C$ ,  $-40\sim 70^{\circ}C$ (without display)
- working humidity:  $\leq 95\%$  (no condensation)
- atmospheric pressure: 1





**Controller, with all features including RS485 MODBUS for communication to Cloud. Hand-held device for Calibration & real time data Monitoring**

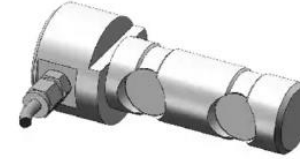
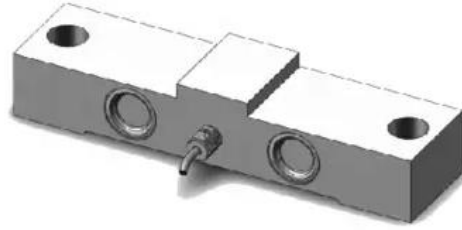
**Power supply : In-built 110 - 220 VAC to 5 VDC**

**Operating Voltage : 5 VDC**

**Status Indication : 5 LEDs - Power, Modbus - Tx & Rx, Ethernet - Tx & Rx**

**Wide choice of Load Cells to Choose from depending on the Truck and its application**

## **Load Cells based On Board Truck scale for Multi axle Trucks & trailers**



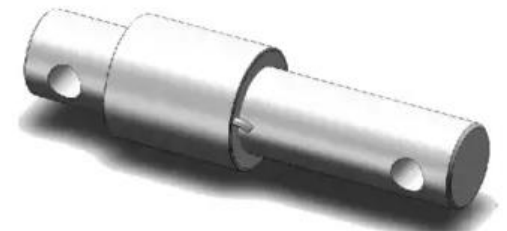
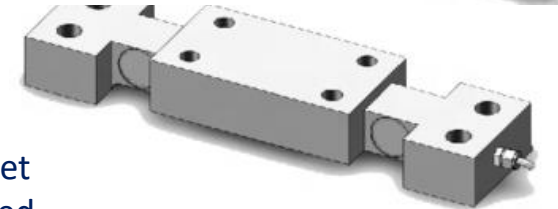
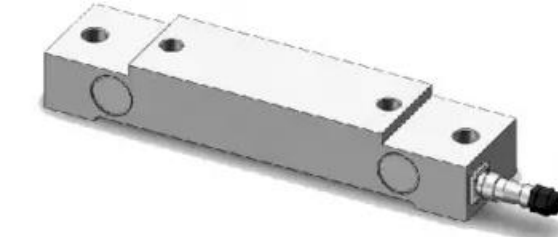
**Operating Temperature : -20 - 55° C**

**Storage Temperature : 0 - 80° C**

**Humidity : 20 - 95 % RH Non-condensing**

**Voltage and ESD Isolation : 1.5 KV RMS**

The Mass IPG is an IoT multi-protocol gateway capable of data acquisition, edge computing and transmission of data over Ethernet or Serial. This is a fully configurable and programmable device based on individual customer's field requirements. Can be configured to work with legacy PLCs and Controllers of various makes like Mitsubishi, Fanuc, Hitachi, Siemens, ABB, Allen Bradley etc. for data acquisition and control to output data directly to the Cloud or to a local historian for storage. This has wired and wireless capabilities and communicates over TCP/IP, RS-485 or RS-422 using MODBUS TCP/RTU protocols. Also has the option of storing data locally up to 16Gb. IPG works over MQTT IoT protocol with Web-sockets to transmit data and reflect the status across all connected devices instantaneously for appropriate actioning. Remote alerts and local alarms can be configured as per individual work flow requirements





(the system will alarm when the truck is driving in the forbidden area)



Wrong area  
Unloading  
Alarm



overload alarm

(when truck is overload, the system will alarm automatically, and record the truck's overload information )



over speed alarm

(when truck is overspeed, the system will alarm automatically, and record the truck's overspeed information )

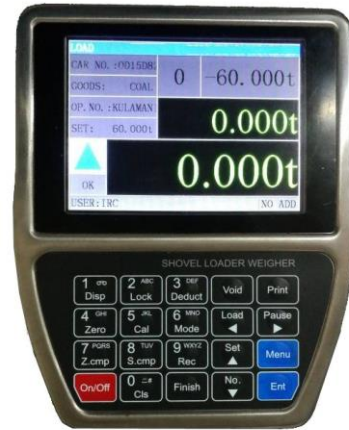




Oil Pressure Sensor  
[IP67, Switzerland]



Position Sensor  
[IP67]



**Off Road Dumper, On Board Weighing with  
Pressure Transducers.  
Capacities upto 400t  
2 Transducers Mounted on the  
Lifting Cylinders**