

Passion for Pumps

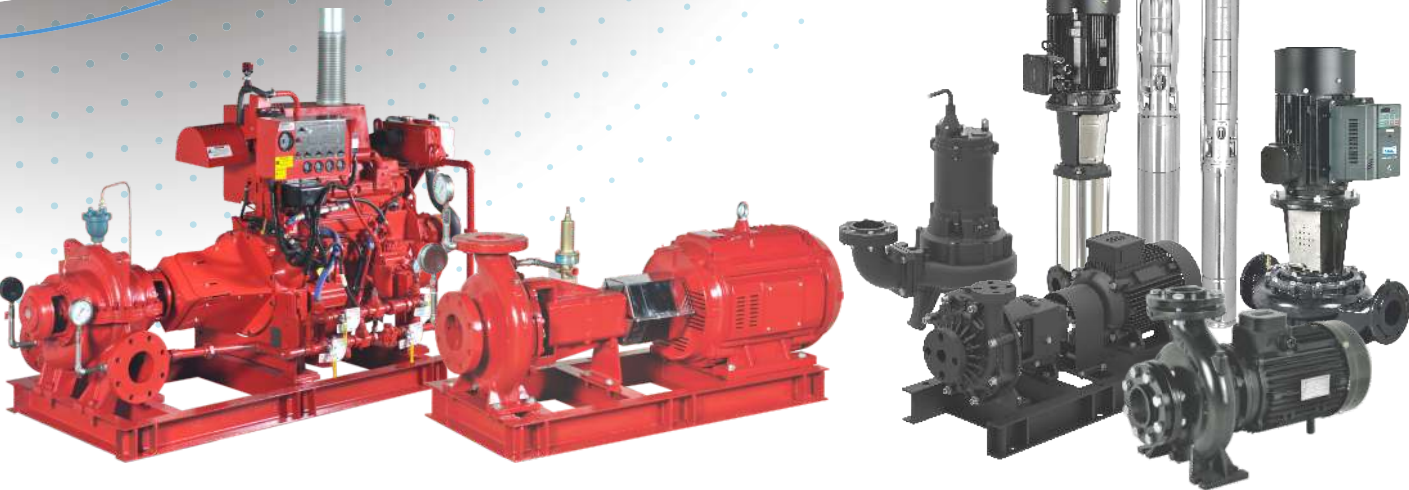


QUALITY | INNOVATION | SUSTAINABILITY



# High Technology Fluid Handling Solutions

 [www.lubipumps.com](http://www.lubipumps.com)





## COMPANY OVERVIEW

When it comes to the science of pumping, Lubi pumps present smart, sturdy and sustainable pumping solutions with over 50 years of unmatched experience and expertise for applications in Industries across the spectrum.

We provide pumping solutions from more than 5000 different models of pumps which can be customised in raw materials or design based on the field application.

We are a vertically integrated manufacturing company where starting from Design and Engineering of products to manufacturing of components, assembly, testing and final finishing and packaging is done within our various manufacturing facilities. This helps us in providing our customers with Top Quality, Competitively Priced Products delivered On Time to the customers.

We export our products worldwide to more than 80 countries. We have a subsidiary company in UAE for distribution of products in Middle East and another one in Spain for distribution of our products in Europe.

We are committed to the Green Energy movement by continuously working towards making our products more Energy Efficient and certifying them through agencies like Bureau of Energy Efficiency (BEE). We are also offering a wide range of Alternative Energy Sustainable Pumping Products like Solar Submersible and Monoblock Pumps.

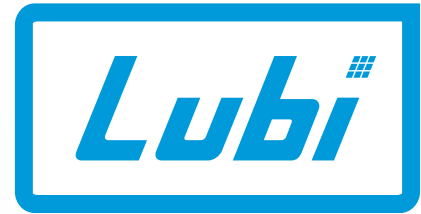
Due to our large volume of exports to USA and Europe, we have a large range of products which are certified by UL, FM and CE for safety.

We are committed to After Sales Service and understand that After Sales Service is the most important part of our business model. In view of this we have a Customer Care Number : 9824200800, where customers can register service requests. These service requests are promptly addressed by our team of Locally Designated Service Partners or by Head/Branch Office Service Technicians to close the service request as soon as possible.

Our aim is to provide a Comprehensive Pumping Solution to the customer with Quality Products which are Priced Competitively, delivered On Time and have the Lowest Life Cycle cost, supported by impeccable After Sales Service.



**50+**  
YEARS OF  
PUMPING TRUST



**Passion for Pumps**

**QUALITY  
INNOVATION  
SUSTAINABILITY**

## INFRASTRUCTURE

We have nine state of the art modern, high technology, manufacturing facilities in India comprising to more than 350,000 square meter of floor area to manufacture the entire range of products offered by Lubi.

All the manufacturing facilities are ISO-9001-2008 certified for Quality Systems and ISO 14001- 2004 certified for Environment Management Systems by TUV, Germany.

We have a manufacturing capacity of 700,000 pumps per annum covering more than 5000 different models.

We also have a separate Design and Engineering Department employing 50 full time Engineers who work towards providing Design and Engineering support for our Products and Manufacturing Processes used in our factories.

We have state of the art DISA High Pressure Moulding Line in our Cast Iron and Bronze foundry which enables us to produce our own castings with superior quality and surface finish for our products. We also have state of the art Aluminum Die Cast Machines to manufacture Aluminum Components used in our products.

We have CNC machining equipment in each of our factories to ensure high quality, productive and precise machining of components for our products. Dedicated Automated Assembly Lines are used for High Productivity and Quality of our products. All components are Cathode Electro Deposition (CED) coated after machining but before assembly so that rust and corrosion is eliminated.

We have Engineering Plastic Injection Moulding machines and Ultrasonic Assembly machines for manufacturing components used with our products,

All products are thoroughly tested for quality and performance before dispatch.

We have a team of more than 2500 dedicated employees to run our operations.

We have an extensive marketing network in India with more than 20 Branch Offices located in different states of the country. We also stock fast moving products at the Branch to ensure prompt delivery.





**LBS Series**

## Single-stage Bare Shaft End-suction Pumps

**Performance :**  
Flow Range : Up to 1060 m<sup>3</sup>/h  
Head Range : Up to 160 metres

**Applications :**

Water supply, Pressure boosting for high rise buildings, hotels industry etc., Industrial washing & cleaning systems Cooling & Air Conditioning systems, Boiler feed and condensate transfer system, Irrigation systems for fields including sprinkler & drip irrigation systems.



**LES Series**

## Single-stage End-suction Pumps

**Performance :**  
Flow Range : Up to 1060 m<sup>3</sup>/h  
Head Range : Up to 160 mtr.

**Applications :**

Water supply, Pressure boosting for high rise buildings, hotels industry etc., Industrial washing & cleaning systems, Fire protection systems, Cooling & Air Conditioning systems, Boiler feed and condensate transfer system, Irrigation systems for fields including sprinkler & drip irrigation systems.



**LBI Series**

## End-suction Centrifugal Monoblock Pumps

**Performance :**  
Flow Range : Up to 150 m<sup>3</sup>/h  
Head Range : Up to 55 metres

**Applications :**

For suitable liquids which are thin, clean, non-explosive, non-aggressive, not containing solid particles or fibers.  
For water supply systems and irrigation.  
For heating, cooling, air-conditioning and circulation plants.  
For civil, industrial and fire fighting applications.



**LHC Series**

## Horizontal Split Case Pumps

**Performance :**  
Flow Range : Up to 2700 m<sup>3</sup>/h  
Head Range : Up to 160 meters

**Applications :**

Suitable for handling water with slight impurities in:  
Industries, Water works, irrigation, Water Circulation, Air Conditioning Plants, Processing Plants, Paper, Sugar and Textile Mills etc.  
Power Plants, Refinery, Storm water, Sprinkler irrigation, Waste Water Treatment Plants, Fertilizer Plants.

LCR, LCRI, LHR, MVN Series



## Vertical Multistage Centrifugal Pumps

**Performance :**  
Flow Range : Up to 180 m<sup>3</sup>/h  
Head Range : Up to 320 meters

**Material of Construction :**  
Cast Iron, Stainless Steel 304 & Stainless Steel 316

**Applications :**  
Pressure Boosting in buildings and industry  
Reverse Osmosis and Ultra-filtration systems  
Fire Fighting systems (Jockey Pumps)  
Boiler Feed and Condensate Systems  
Washing and Cleaning systems.

MXF, SMSJ, LCF Feed Pump



## Horizontal Single-stage Centrifugal Pumps

**Performance :**  
Flow Range : Up to 10 m<sup>3</sup>/h  
Head Range : Up to 36 meters

**Applications :**  
Domestic water supply systems.  
Civil & industrial water supply systems.  
Sprinkler systems.  
Irrigation.  
Gardens, farms.

MH, SMCI Series



## Horizontal Multistage End-suction Pumps

**Performance :**  
Flow Range : 0.5 to 25 m<sup>3</sup>/h  
Head Range : Up to 75 meters

**Applications :**  
Liquid transfer and circulation of liquids within light industry and farming, Pressure boosting in single-pump and multi-pump booster systems, Domestic water supply, Cooling systems  
Air-conditioning systems, Washing and cleaning systems  
Water treatment.

LCS Series



## Close-coupled Stainless Steel Centrifugal Pumps

**Performance :**  
Flow Range : Up to 120 m<sup>3</sup>/h  
Head Range : Up to 55 meters

**Applications :**  
Water supply, Pressure boiler feeding,  
Pure water treating systems, Pharmaceutical and food stuff,  
Refining chemical industries,  
Industrial washing and sprinkler system.



### AQUAPACK Series



## HPN Pressure Booster Systems

### Features & Benefits

- Cascade control, only the required number of pump is in operation at any time.
- Single phase prevention & overload motor prevention.
- Dry run protection & low pressure protection.
- Manual operation • Pump ON & pump Fault indication.
- Automatic alternation (changeover) of lead pump to ensure equal run time of all pumps.
- At the heart of the controller is a PLC with 5.7" Color touch Screen Display (HMI) to program the Aquapack 1000 system as per the site requirement.
- Also available VFD controls for power saving.

### Applications :

Transfer and pressure boosting of clean water for community water supply, Apartment complex, Hotels, Hospitals, Industries, Commercial buildings, Schools, etc.

### LCRNH Series



## High-pressure Vertical Multistage Centrifugal Pumps

### Performance :

- Flow Range : Up to 180 m<sup>3</sup>/h
- Max. Operating Pressure : 50 bar

### Applications :

Process water systems.  
Washing and cleaning systems.  
High-pressure wash down systems.  
Boiler feed and condensate systems.  
Ultra-filtration systems.  
Reverse osmosis systems.

### SLSJ, SLSW Series



## Stainless Steel Submersible Bore Well Pumps

### Performance :

- Flow Range : Up to 280 m<sup>3</sup>/h
- Head Range : Up to 750 meters

### Applications :

Water supply  
Irrigation  
Civil  
Industrial  
Fire fighting

### LHM, LVM Series



## Submerged Centrifugal Pumps

### Performance :

- Flow Range : Up to 270 m<sup>3</sup>/h
- Head Range : Up to 95 metres

### Applications :

Industrial cooling water application. Industrial washing & cleaning systems. Fire fighting application. Domestic water supply systems. Water supply in commercial buildings, apartments, complexes, hotels, hospitals, schools, bungalows, etc. Sprinkler systems. Gardens, farms & fountains. Dewatering applications.

### LHP, LFP Series



## Sewage / Effluent Pumps

**Performance :**  
Flow Range : Up to 2400 m<sup>3</sup>/h  
Head Range : Up to 50 meters

**Applications :**

Drainage of sewage from the building basements, hotel industry, waste water from factories.  
Drainage of sewage from industrial process factories.  
Emptying of septic tanks, cesspits and sewage pump stations.  
Pumping surface and drainage water from garages and sprinkler systems.

### CSP, LAP Series



## Drainage Pumps

**Performance :**  
Flow Range : Up to 55 m<sup>3</sup>/h  
Head Range : Up to 28 meters

**Applications :**

Slushy water, waste water without solids, sump drainage.  
Drainage application, flood control.  
Dewatering for fish pond or basement.  
As a sump pump for household applications.  
For draining flooded rooms or tanks.

### LAS Series



## Construction Drainage Pumps

**Performance :**  
Flow Range : Up to 145 m<sup>3</sup>/h  
Head Range : Up to 55 meters

**Applications :**

Civil engineering dewatering of tunneling and ground works, also for storm water sewers.  
Dewatering of fluids containing solid sediments.

### LGP Series



## Grinder Pumps

**Performance :**  
Flow Range : Up to 20 m<sup>3</sup>/h  
Head Range : Up to 32 meters

**Applications :**

Used in pressure sewage system. Drainage of waste water from individual residences, apartment, buildings, recreational developments, motels. Transferring waste water of commercial buildings, industrial plants, waste water sampling, small hospitals. Schools, federal, state and local parks' waste water drainage.  
To transfer various waste water and sewage.

LVI, LVS Series



## Close-coupled & Split-coupled Vertical In-line Pumps

**Performance :**  
Flow Range : Up to 1200 m<sup>3</sup>/h  
Head Range : Up to 160 meters

**Applications :**  
Cooling & Heating Systems  
Pressure Boosting Systems  
Industrial Applications  
Water Supply  
Fire Protection System



## HVAC Packaged Pumping Systems

**Applications :**  
Cooling & Heating Systems  
Pressure Boosting Systems  
Industrial Applications  
Water Supply  
Fire Protection System

LSD Series



## Suction Diffusers

**Features**  
Multi functional design incorporating  
a) 90° Elbow.  
b) Inline Strainer.  
c) Flow straightening guide vanes.  
d) Reducing Elbow.  
Removable start-up strainer.  
Cast on support pad.  
Drain Plug with permeant magnet.  
Quick Operating Bolted cover for fast & easy cleanup.

LTV Series



## Triple Duty Valves

**Features**  
• Valve can be inline or 90° degree configuration.  
• Drain Plugs are provided at inlet and outlet of valve.  
• Compact Design.  
• Spring-loaded disc ensures positive sealing and eliminates chatter.  
• Flanges as per PN16, PN25, ANSI125 and ANSI 250.

**Applications :**  
• HVAC Chilled Water Plants for Air Conditioning of Buildings  
Shopping Malls, Auditoriums, Sports Complexes, Airports, etc.  
• HVAC Chilled Water Plants for Industries like Pharmaceuticals,  
Food & Beverage, Chemical Manufacturing etc.



### Intellicon Series



## Multiple Pump Multiple Zone Controller For HVAC Systems

### Features

- Variable speed energy saving optimized solution designed especially for HVAC systems.
- Available with Parallel Sensorless Technology (optional).
- Enhanced control capabilities and performance by optimized staging of pumps as per field demand.
- Multiple Pump, Multiple Zone Control made easy by inbuilt PLC based control.
- Can be integrated with existing or new HVAC system.

### Applications :

Heating systems • Air-conditioning systems

### LBM Series



## Self-Priming Centrifugal Pumps

### Performance :

- Flow Range : Up to 300 m<sup>3</sup>/h
- Head Range : Up to 35 meters

### Applications :

Industries, Public Utilities  
Civil Engineering,  
Construction Industries  
Marine, Waste Treatment  
Agriculture  
Any Other Applications Where Priming Is To Be Avoided.

### LIR, LIP Series



## Coolant / Immersible pumps

### Performance :

- Flow Range : Up to 9.0 m<sup>3</sup>/h
- Head Range : Up to 212 meters

### Applications :

Turning, Chilling, Part washing, Filtration, Condensate systems,  
Wash and clean, Part washing, Milling, Grinding, Spark erosion,  
Wire cutting

### LSH Series



## Swimming Pool Pumps

### Performance :

- Flow Range : Up to 150 m<sup>3</sup>/h
- Head Range : Up to 20 meters

### Applications :

The main application of the LSH pump is recycling and filtering of water in small, medium & large size swimming pools.

The pump incorporates a removable basket filter to filter out leaves, twigs & other large solids. Therefore these pump must be installed between the skimmer & the pool filter.

These pump are designed for pumping pool water being disinfected by chlorine.

### LAC, LN, LP, LBC Series



## Corrosion Resistant Thermoplastic Pumps

**Performance :**  
Flow Range : Up to 65 m<sup>3</sup>/h  
Head Range : Up to 60 meters

**Applications :**  
Chemical process, Pharmaceutical, Food & Beverage processing  
Steel plants, Automobile, Marine/Sea water, Water supply  
Booster service, Cooling water  
Water treatment/Purification  
OEM.

### LDP Series



## Drum Pumps

**Features**  
These pumps are designed specially for drums, vats, totes, containers, carboys, open vessels up to 1.5 mtr (60") deep.

High quality components, Light weight, portable, Easy to install, user friendly operation, Ergonomically designed handle.

**Applications :**  
These pumps are used for pumping out liquids from drums, barrels, large storage vessels, stainless steel tanks, totes, etc.

Chemical plants, Food processing plants, Packaging plants, Plating, Semiconductor, Waste water treatment, Pharmaceutical, Laboratories, Automotive industries, Agriculture.

### LDM Series



## Drum Mixer

**Features**  
High quality components, Light weight, portable, Easy to install, user friendly operation, Cost effective mixing, Few parts - maintenance friendly, Long lasting.

**Applications :**  
LDMB mixers are design to provide service for a variety of mixing applications.  
These drum mixers are suitable for mixing/blending low viscosity fluids & suspending or dissolving low concentrations of solids in water or water like liquids including light oils and syrups.

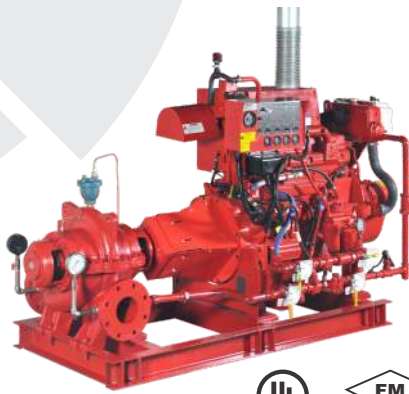
### LT Series



## Vertical Turbine Pumps

**Performance :**  
Flow Range : Up to 1000 m<sup>3</sup>/h  
Head Range : Up to 500 meters

**Applications :**  
Irrigation, Water Supply, Circulating Water for Thermal and Nuclear Power Plants, Fire Fighting, Flood Control, Storm water, Sump service



### FLHC Series

## Horizontal Split Case Fire Pumpset

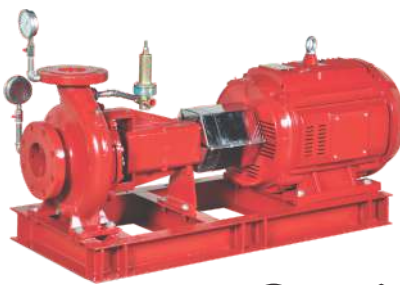
**Performance :**  
 Flow Range : 1700 to 11350 lpm  
 Head Range : 43 to 224 meters

Available with Diesel Engine drive as well as Electric motor drive and Controllers

**Applications :**

Commercial complexes and high rise buildings, Petrochemical industries and Gas plants, Oil and Gas on-shore & off-shore platforms, Oil terminals Airports and ports, Jetties, Marine applications, Power stations and transformer stations  
 Chemical industries, Manufacturing plants  
 Fire-work industries, Warehouses/godowns.

### FLBS Series



## End-Suction Fire Pumpset

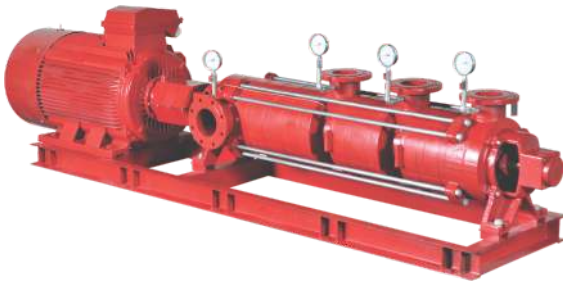
**Performance :**  
 Flow Range : 190 to 4730 lpm  
 Head Range : 54 to 210 meters

Available with Diesel Engine drive as well as Electric motor drive and Controllers

**Applications :**

Commercial complexes and high rise buildings, Petrochemical industries and Gas plants, Airports and ports, Jetties, Marine applications, Power stations and transformer stations  
 Chemical industries, Manufacturing plants  
 Fire-work industries, Warehouses/godowns.

### LMM Series



## Multi stage Multi outlet Fire pumps

**Performance :**  
 Flow Range : Up to 6500 lpm  
 Head Range : Up to 450 meters

Available with Diesel Engine drive as well as Electric motor drive and Controllers

**Applications :**

Commercial complexes and high rise buildings, Petrochemical industries and Gas plants, Airports and ports, Jetties, Marine applications, Power stations and transformer stations  
 Chemical industries, Manufacturing plants  
 Fire-work industries, Warehouses/godowns.

### FLBC / FLBB Series



## Terrace Booster Fire Pumps

**Performance :**  
 Flow Range : Up to 150 m<sup>3</sup>/h  
 Head Range : Up to 100 meters

**Applications :**

Pressure Boosting for fire applications.  
 Mainly used for offices, commercial complex, school, hospital, low rise buildings etc.





## LUBI INDUSTRIES LLP

Near Kalyan Mills, Naroda Road, Ahmedabad - 380 025. Gujarat, INDIA.

**Tel. #** 91-79-61700100, **Fax. #** 91-79-61700399

**Customer Care Number** : 9824200800

**E-mail** : [indsales@lubipumps.com](mailto:indsales@lubipumps.com) • **Website** : [www.lubipumps.com](http://www.lubipumps.com)

*Product Improvement is a continuous process at 'LUBI'. The data given in this publication is therefore subject to revision.*

*• Printed colours may be slightly different from the actual products.*

### Branches across India

- Bangalore
- Bhubaneswar
- Coimbatore
- Ghaziabad
- Guwahati
- Gwalior
- Hubli
- Hyderabad
- Indore
- Jaipur
- Jabalpur
- Kanpur
- Kochi
- Kolkata
- Mumbai
- Nagpur
- Noida
- New Delhi
- Patna
- Pune
- Raipur
- Ranchi
- Udaipur
- Vijayawada