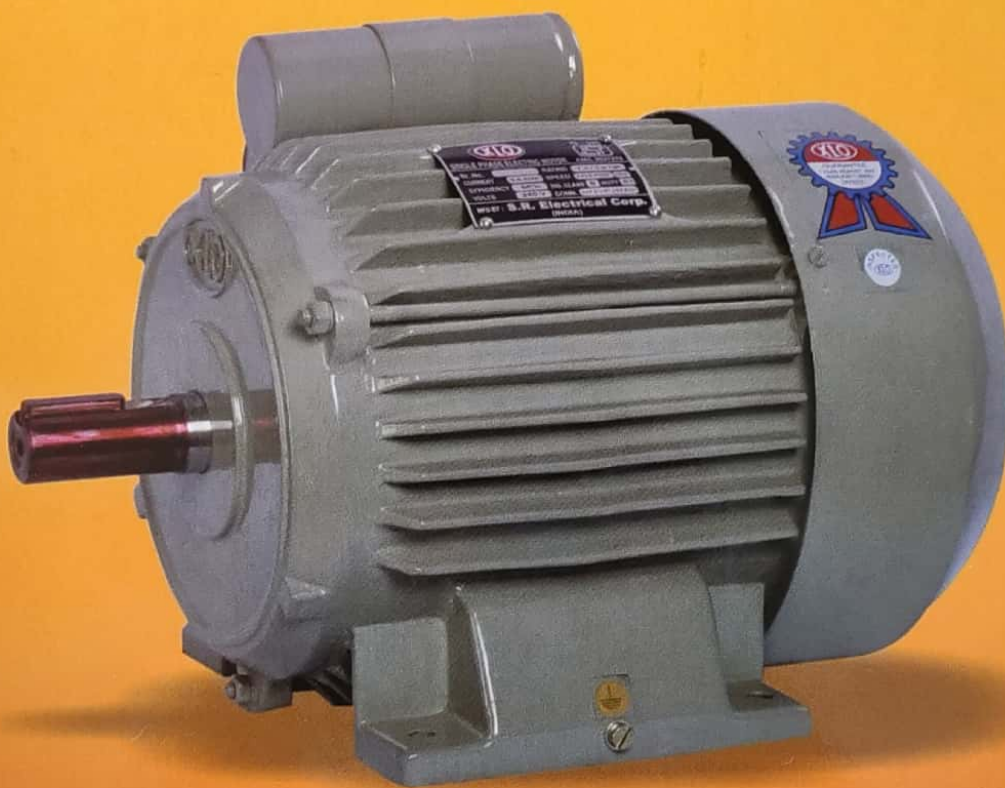


# XLO

MOTORS



**SINGLE PHASE a.c. INDUCTION MOTORS  
FOR GENERAL PURPOSE**

*Energy Saver In **XLO** Motor Favour*

### ROTOR & SHAFT

Pressure aluminium die casted rotors & shaft of EN-8D steel material is provided in all motors. All rotors are dynamically balanced for low vibration and long bearing life.

### MOTOR BODY AND COVERS

These are made of graded C.I. casting material for required strength and reliability. Motor body with external fins increase heat dissipation rate. thus improving motor life.

### STATOR

Electric stamping are of CRNO material with grade M-45, C-6 coating with lower losses.

### ASSEMBLY

Assembly is done on horizontal hydraulic press for perfect fitment and best alignment of shaft with bearings which is never possible in manual fitting thus improved quality & life by proper assembling

### BEARINGS

High speed or equivalent imported bearings are used and mounted on shaft by press for smooth running, low noise and long life.

### CENTRIFUGAL GEAR & OPEN CIRCUIT SWITCH

Field proven centrifugal gear is used for trouble free operation. Open circulating Switch has sintered contacts consisting of silver alloy and copper, These contacts have excellent antiweld properties & can safely supture heavy current.

### WINDING

Motors are manufactured with insulation Class 'F'. Modified polyester enamelled copper wire which is tested as per IS:13730 is used for winding of all motors. Additionally high dielectric and mechanical strength material is used for slot insulation. Stator varnished in vaccum empragnated plants.

### VOLTAGE AND FREQUENCY VARIATION

Single phase electric motors are designed 230v  $\pm$  6%, 50Hz  $\pm$  3% A.C. Supply

### INSPECTION & TESTING

All components are manufactured and inspected as per ISO:9001-2015 quality system on latest precision machines and calibrated instruments to give years of maintenance free operation. All motors are tested as per relevant Indian Standards in latest and well equipped computerized lab by well qualified Engineers.

### APPLICATION

- Domestic Pumps
- Vaccum Pumps
- Surgical Pumps
- Wet Grinders
- Domestic Floor Mills
- Sewing Machines
- Machine Tools
- Floor Polishers
- Compressors
- Wood Working Machines

### WARRANTY

**XLO** Products are warranted for a period of 12 months from the date of despatch against any manufacturing defects in materials, workmanship under normal use and service.

Range: **XLO** has a wide range of motors ranging from 0.18KW / 0.25 HP to 2.2KW / 3.0HP Single Phase with ISI marked as per IS : 996 - 2009. and also has range of Three Phase Electric Motors from 0.18KW / 0.25HP to 30KW / 40HP in difference speed.

**XLO** is able to cater to every need of customer **XLO** believe not only in customer satisfaction but strives to delight the customer.

TESTING LAB.



### PERFORMANCE DATA 1- $\phi$ TEFC CAPACITOR START & CAPACITOR RUN INDUCTION MOTORS 230 $\pm$ 6% 50 Hz $\pm$ 3%

K.W.	H.P	Pole	Frame Size	Insu. Class	FL. RPM	FL. AMP	Efficiency	Capacitor Run	Capacitor Start	Motor Wt. (Kg.)
0.37	0.5	4	90S	B	1380	3.5	61.0	10MFD.	60-80	17.220
0.75	1.0	4	90S	B	1390	6.5	69.0	10MFD.	80-100	21.000
1.10	1.5	4	90L	B	1420	9.0	71.0	15MFD.	120-150	26.570
1.50	2.0	4	112M	B	1420	12.0	71.0	20MFD.	150-200	34.900
2.20	3.0	4	112L	B	1430	16.2	72.0	45MFD.	200-250	41.100

# XLO ELECTRICALS CORPORATION

7th K.M. STONE, PATHANKOT ROAD, JALANDHAR.

MOB.: 98141-03939, TEL. : 0181-2610813, FAX : 0181-2610812

Website : [www.xloelectricals.com](http://www.xloelectricals.com) ● e-mail : [xloelectricals@gmail.com](mailto:xloelectricals@gmail.com)