

ferco
SHUTTERS & SEATING



FIRE RATED

**ROLLER SHUTTER
WITH EGRESS DOOR**

www.fercoshutters.com



Why Ferco?



Founded in
1983



Distributed
across 20 countries



ISO
Certified



Global Reach:
UK, Singapore, Malaysia, UAE, India



Trusted
Customer Support

Product Features

- ✓ Fire rating of up to 2 hours during fire emergencies
- ✓ Meets the strict standards set by ANSI/UL 10B and NFPA 80
- ✓ Approved by U.A.E Civil Defence, demonstrating its high level of quality
- ✓ Height coverage up to 5.1m: Ensuring top safety measures
- ✓ Maximum area coverage of 61.2 sqm: Ideal for large commercial spaces
- ✓ Gravity fail-safe system: Continuous protection during power outages
- ✓ Thermal fusible link: Swift closure for efficient containment
- ✓ Electric solenoid release mechanism: Quick and efficient operation
- ✓ Z275 Galvanized Steel: Durable and Corrosion-Resistant
- ✓ Roll-formed heavy-duty guide and bottom bar: Sturdy design
- ✓ Panic bar on Egress door: Easy evacuation during emergencies
- ✓ Customizable powder-coated finishes: Customized aesthetics



intertek



Product Specification

The specifications shall encompass the design, production, installation, and functioning of the fire rating required as indicated in UL 10B.

01

Curtain Slat

The shutter curtain is made of 75mm pitch, 1.0mm thickness superior galvanized steel slat. Slats will have reinforced interlocking profiles with edges cut off for end-locking the axial movements.

02

Bottom Bar

The bottom bar leading slat profile is made of galvanized steel roll-formed with 1.0/1.2mm thickness and a top interlocking profile with a flat bottom. Two no. of 75x75x6.0mm thick galvanized steel angles are bolted at the bottom to form an inverted 'T'.

03

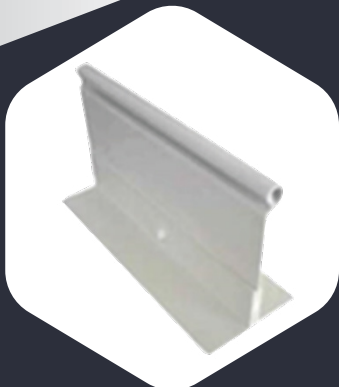
Side Guide Rails

For exposed, face fixing applications, roll-formed 'G' shaped heavy-duty guides made of galvanized steel of sizes 75/105mm wide (depending on the door size) by 80mm depth by 3mm thickness and fixed by fasteners.

04

Barrel

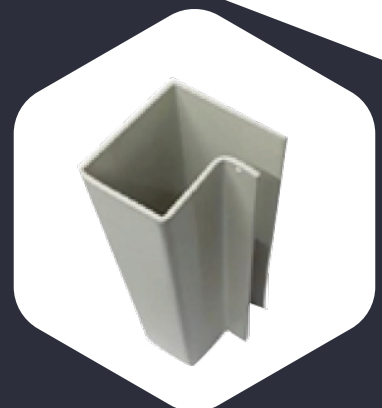
Barrel is made out of heavy-duty seamless steel pipe, welded with axles of sizes $\phi 40$ - $\phi 60$ mm according to the sizes of shutters. This barrel is fixed to the right and left end plates with heavy-duty sealed roller bearings.



Galvanized Steel
Single Skin Slats



T Shaped Galvanized
Steel Bottom Bar



Roll-Formed Heavy Duty
Side Guide Rail

05**Operator**

The Motor make as shown in the Ferco shutter fire test report OR other independently tested motors with UL Certification. The Motor shall be a reversible squirrel cage induction motor equipped with ERS & TPL and interfaced with an FA panel.

06**Hood (Motor Hood - Optional)**

Shutter box covers are made out of 0.8mm thickness galvanized steel sheets with folded edges for rigidity.

07**Shutter Box**

The shutter box is made out of two heavy-duty steel end plates of thickness 6 - 12mm according to the size of the shutter, joined together by using 5 nos. of 50mm X 25mm steel hollow sections and in black colour primer finish. Two nos. of 50mm x 50mm x 4.5mm thick steel L angles with slotted fixing holes to be welded with end plates for fixing the shutter box to the structure.

08**Auto-Closing Mechanism**

All fire shutters are equipped with a fusible link mechanism. Upon sensing the heat of 74°C, the fusible link melts and releases the brake of the Motor, and the shutter descends by gravity. On receiving a fire/smoke signal, the ERS releases the brake of the Motor upon receiving a processed signal of 24V and 400mA. To reset the brake, a reset lever is provided on the Motor.



Fire Shutter
Operator



ERS - Electric Solenoid +
Thermal Fusible Link (TPL)



Fire Alarm
Panel (FA)

09

Push Button Control

Low voltage Push button control with 'up', 'down', and 'stop' buttons are provided. The Push Button is supplied with a stainless-steel lockable enclosure upon request.

10

M&E Requirements

Single Phase, 230V, 50Hz/60Hz, 13A (OR) Three Phase, 415V, 50Hz, 20A power supply at the shutter box location.

11

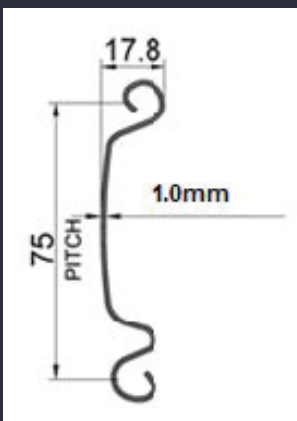
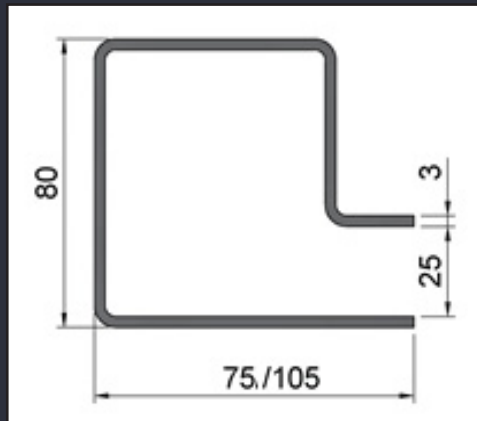
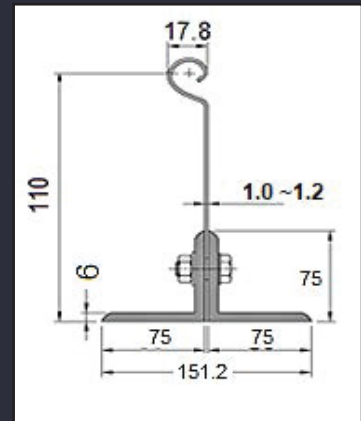
Egress Door

The fire shutter is equipped with an egress door. The Egress door comprises a lever handle, mortise lock, panic bar, and door closer. The door leaf is fixed with a swing frame and magnetic lock holder, which holds the swing frame when the shutter is opened. The Egress door with swing frame assembly will close completely upon receiving a processed signal of 24V and 400mA. The egress door will be used as an emergency exit during fire conditions.

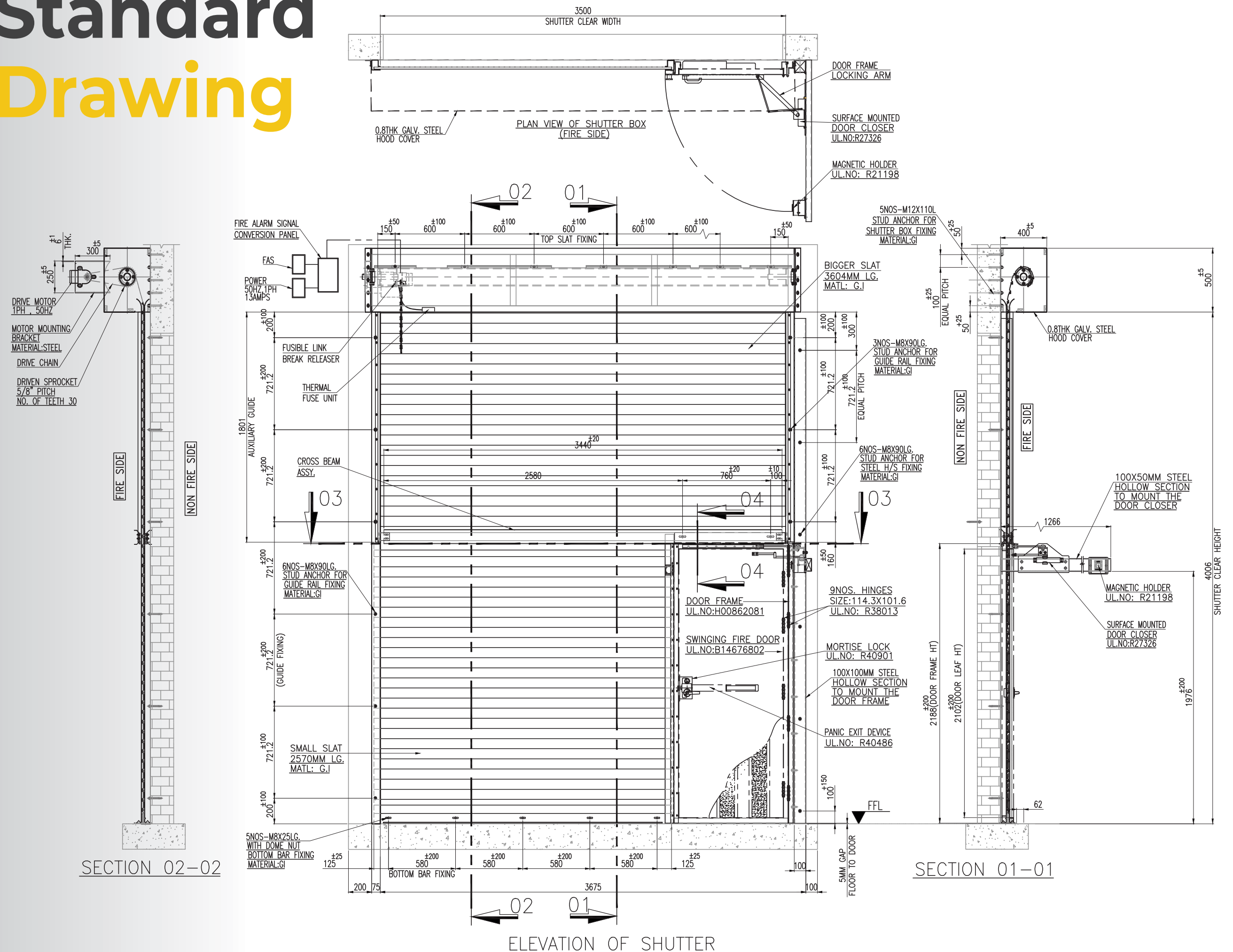
12

Optional Devices/Services

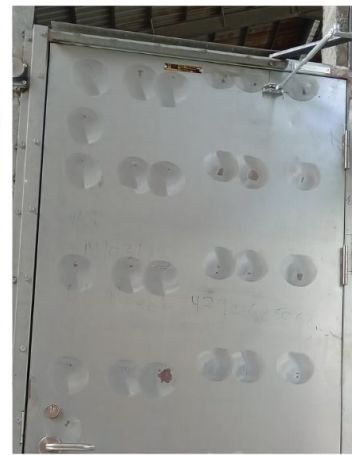
- Motor Hood
- Guide Seals
- Wind Locks
- Delay Timer
- Warning Flash and Audio Alarm
- Powder Coating Special RAL Colors
- Connection to Heat/Smoke Detector
- Battery Back-up
- Safety Photocell
- Remote Control System
- Bottom Safety Edge Sensor

**F75 Single skin Slats****Side Guide Rail****Bottom Bar**

Standard Drawing



Fire Testing Highlights



Get in touch with us today to discover more about our premium Fire shutters and to book your free consultation.

Contact us

ferco
SHUTTERS & SEATING

Dubai

Ferco Shutters and Seating Systems M.E (Manufacture) LLC
Plot 247-125
Al Qusais, Industrial Area 4
P.O. Box 233962 Dubai UAE
Tel: +971 (04) 258 6433
Fax: +971 (04) 258 6433
enquiryUAE@fercoshutters.com

Singapore

Ferco Shutters and Seating Systems Pte Ltd
120 Hillview Avenue
#02-04 Kewalram Hillview
Singapore 669594
Tel: +65 6760 8383
Fax : +65 6760 7503
sales@fercoshutters.com

India

Ferco Shutters and Seating Systems Pvt Ltd
8/1A2B & 8/2A2, Industrial shed,
Parivakkam Road,
Sennerkuppam, Poonamallee,
Chennai - 600 056, Tamilnadu
Tel: 1800 258 2526
reachus@fercoshutters.com