

EEG Machine Brochure – Neurology Solutions

CE-Certified & CDSCO-Approved EEG Systems for Clinical & Research Excellence

We provide advanced EEG systems designed for hospitals, neurology clinics, and research institutions. Our range includes high-channel video EEG systems, compact clinical models, and ultra-portable devices that ensure precision, reliability, and ease of use.

Comparison of Models

Features	Neuromax 32/64-Channel (Showcase)	Neurocompact 24-Channel	Necton Ultra-Portable
Type	Advanced Video EEG System	Compact Clinical EEG	Pocket-sized Portable EEG
Channels	32 (Expandable to 64)	24	24
Operation	PC-based with video integration	PC-based routine EEG	Portable handheld with software
Key Features	Brain Mapping, Epilepsy Monitoring, Sleep Studies, Long-Term Monitoring	Routine EEG, Compact Design, Cost-effective	Portable, ICU & Outdoor use, Quick setup
Power Supply	USB powered	USB powered	USB powered
Data Storage	Long-term storage with advanced reporting	Basic storage & export	Portable data storage
Use Case	Hospitals, Research Institutes, Medical Colleges	Clinics, Teaching Institutes	Bedside, Emergency & Field use

Neuromax 32-Channel EEG

The Neuromax 32-Channel EEG Machine is a CE-certified and CDSCO-approved diagnostic solution, trusted by leading hospitals and medical institutions. With advanced amplifiers, high-resolution recording, and video EEG integration, it is ideal for epilepsy monitoring, sleep studies, and research applications. Expandable to 64 channels, Neuromax ensures precision, scalability, and unmatched clinical reliability.

Accessories

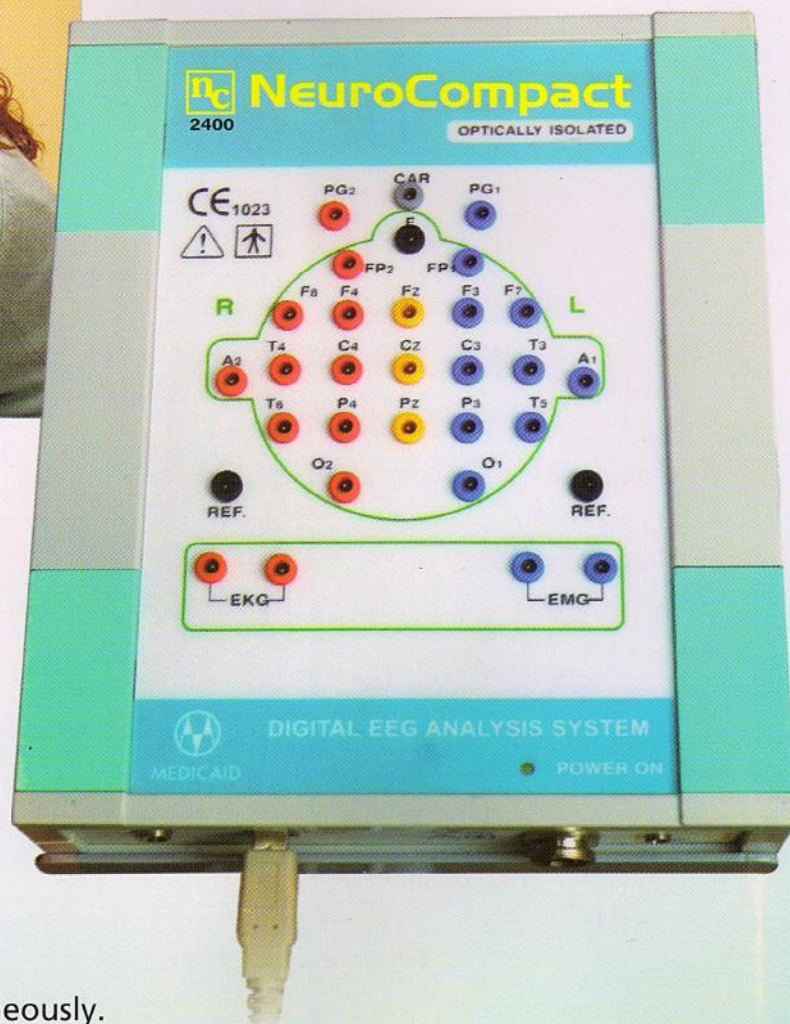
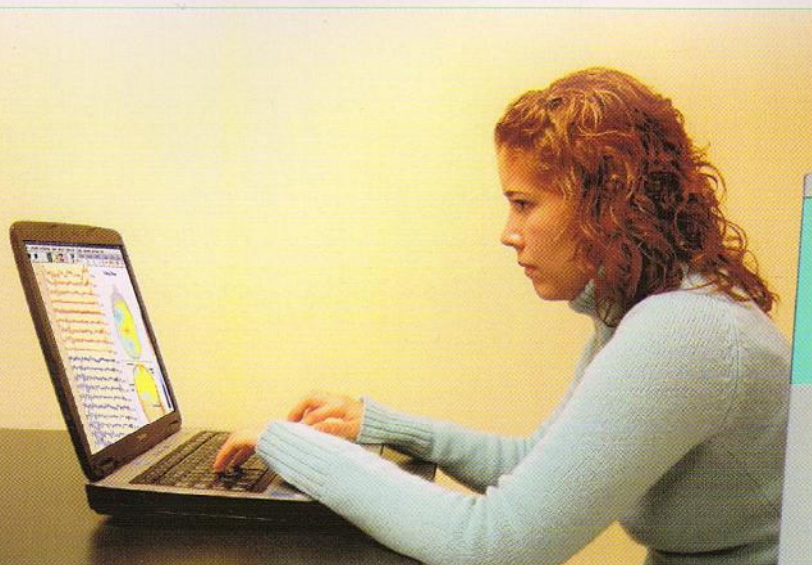
- EEG Electrodes & Caps
- Video Integration Tools
- Amplifiers & USB Interface
- Patient Response Switches
- Software & Analysis Tools
- Carry Case for Portable Models

□ For detailed pricing & quotation, contact us at: rsenterprises227@gmail.com | +91 9832362661

NeuroCompact

Truly Portable Digital EEG

Directly connect to USB port, no external power supply required



Features

- Easy laptop connectivity.
- Ideally suitable in ICU's.
- In-built word processor for reporting.
- Brain Mapping.
- Optically Isolated.
- Auto Spike Detection.
- Operating system Windows XP.
- Comparison of three montages simultaneously.
- Complete EEG transfer on CD & playback without additional software.
- Upgradable to Video EEG.



An ISO 13485 : 2003 Company

CE
1023

NeuroCompact is the consistent further development of our paperless digital EEG device and represents a new generation of our digital system based on Windows XP.

Technical Specification

- Max. no. of Display Channels
 - NC - 2400 : 24 Channels
 - NC - 3200 : 32 Channels
- A/D Conversion : 16 bit
- Sampling Rate : 1024 Hz
- Sensitivity : 1 to 1000 μ v
- Low Pass Filter : 0.1, 0.3, 1 & 5 Hz
- High Pass Filter : 15, 35, 70, 100 Hz
- Notch Filter : 50/60 Hz on/off
- Sweep Speed : 7.5, 15, 30 & 60 mm/sec
- Input Impedance : > 10 M ohm
- CMRR : > 100 db
- Noise Level : Less than 1 μ v
- Flash Rate : 1 to 30 Hz Software Controlled
- Dimension : 195 x 165 x 50 mm
- Weight : 650 gms. (without laptop)

Standard Accessories

- Disc Electrodes - 50 nos.
- EEG Paste - 2 Jars.
- Ground Wire - 1 No.
- Interface Cable - 1 No.
- Photic Flash - 1 No.
- Installation CD - 1 No.
- Carry Bag - 1 No.



Photic Flash



Installation CD



EEG Paste



EEG Electrodes



Interface Cable

Features

- Online, Offline reformatting of HLF, LLF, Sensitivity and number of Channels
- Split Screen facility to compare three montages simultaneously
- Montage diagram & Photic Marks on Printout
- Automatic Hyperventilation Timings
- Automatic AC Impedance check
- Brain Map of frequency, Spectral and voltage with Left/Right view
- Programmable Colour of each Channels
- Users Programmable Photic Sequences & Events
- Ultra fast automatic paging facility for efficient analysis
- Facility to zoom required portion of data
- Facility to write comments during review
- Facility to send data by e-mail
- Search bar facility to access to any part of data
- User defined protocol for acquisition
- Computerised calculation of Amplitude & Time
- Selected EEG data extraction
- Simultaneous acquisition and Analysis facility
- Facility to mark pages in review and print

Computer Hardware (Optional)

- Computer : Core 2 Duo 2.93 GHz, 2 GB RAM
: 350 GB HDD or better
DVD Writer, Keyboard, Mouse
- Monitor : 17" Colour Supporting 1024x768 mode
- Printer : Any Inkjet/Laser printer supporting windows.

Optional

High Resolution Camera for Video EEG
Model : NC-2400 V, NC-3200 V

MARKETED BY
R.S. Enterprises



Head Office
R.S. Enterprises
Mayfair Crown B-202
Zila Parishad Road
Jyoti Nagar, Siliguri
734001

Kolkata Branch
R.S. Enterprises
Upohor Complex
C-2/614, Chakgaria
Kolkata - 94

Guwahati Branch
R.S. Enterprises
3rd Floor,
Above Old SBI Building
Ulubari, Guwahati
781007

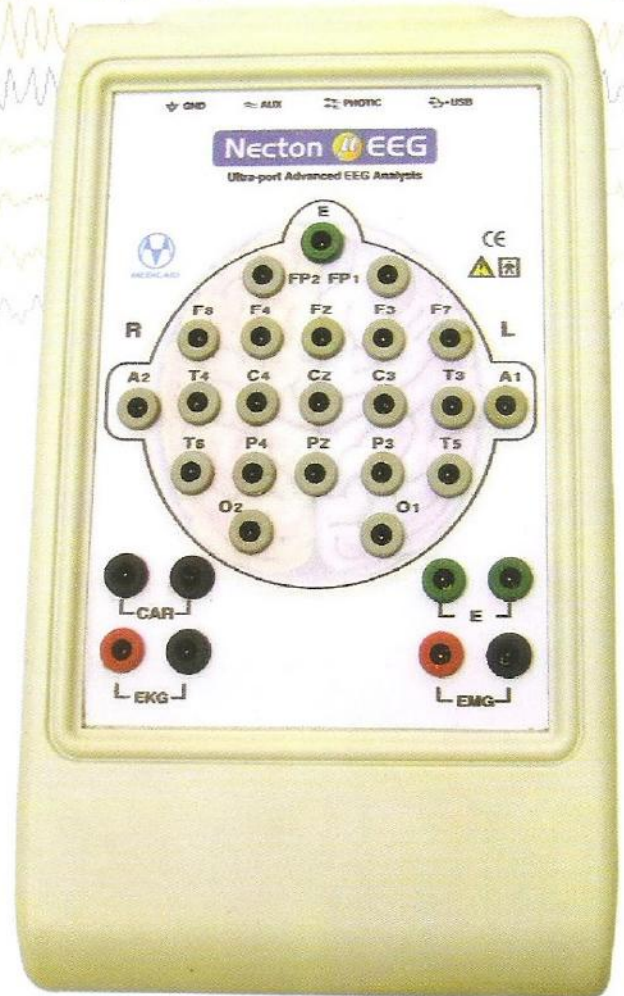
www.rsenterprisesindia.co.in
E-mail: rsenterprises27@gmail.com
Phone: 9832363261 / 9800685887 / 9474878436

MANUFACTURED BY
Medicaid Systems

Necton μ EEG

Ultra-port Advanced EEG Analysis

Directly connect to USB port, no external power supply required



Features

- Easy laptop connectivity.
- Ideally suitable in ICU's.
- In-built word processor for reporting.
- Brain Mapping.
- Optically Isolated.
- Auto Spike Detection.
- Operating system Windows Based.
- Comparison of three montages simultaneously.
- Complete EEG transfer on CD & playback without additional software.
- Upgradable to Video EEG.



Serving Health..... Through Technology

Features

Online, Offline reformatting of HLF, LLF, Sensitivity and number of Channels

Split Screen facility to compare three montages simultaneously

Montage diagram & Photic Marks on Printout

Automatic Hyperventilation Timings

Automatic AC Impedance check

Brain Map of frequency, Spectral and voltage with Left/Right view

Programmable Colour of each Channels

Users Programmable Photic Sequences & Events

Ultra fast automatic paging facility for efficient analysis

Facility to zoom required portion of data

Facility to write comments during review

Facility to send data by e-mail

Search bar facility to access to any part of data

User defined protocol for acquisition

Computerised calculation of Amplitude & Time

Selected EEG data extraction

Simultaneous acquisition and Analysis facility

Facility to mark pages in review and print

Technical Specification

- Channel : 24-32
- A/D Conversion : 16 bit
- Sampling Rate : 1024 Hz
- Sensitivity : 1 to 1000 μ v
- Low Pass Filter : 0.1, 0.3, 1 & 5 Hz
- High Pass Filter : 15, 35, 70, 100 Hz
- Notch Filter : 50/60 Hz on/off
- Sweep Speed : 7.5, 15, 30 & 60 mm/sec
- Input Impedance : > 10 M ohm
- CMRR : > 100 db
- Noise Level : Less than 1 μ v
- Flash Rate : 1 to 30 Hz Software Controlled
- Dimension : L- 6.75 x W- 4.00 x H- 1.25 Inch
- Weight : 240 Gram

Laptop, Computer Hardware (Optional)

- CPU : i3 Processor, 2 GB RAM,
500 GB HDD, DVD Writer, OS Window
- Printer : Any Inkjet Printer supporting window
- Optional : Laser Printer

Standard Accessories

- Disc Electrodes - 50 nos.
- EEG Paste - 2 Jars.
- Ground Wire - 1 No.
- Interface Cable - 1 No.
- Photic Flash - 1 No.
- Installation CD - 1 No.
- Carry Bag - 1 No.



Photic Flash



Installation CD



Conductive EEG Paste



Gold Plated EEG Electrodes



Interface Cable

Optional

High Resolution Camera for Video EEG

MARKETED BY
R.S. Enterprises



Head Office
R.S. Enterprises
Mayfair Crown B-202
Zila Parishad Road
Jyoti Nagar, Siliguri
734001

Kolkata Branch
R.S. Enterprises
Upohor Complex
C-2/614, Chakgaria
Kolkata - 94

Guwahati Branch
R.S. Enterprises
3rd Floor,
Above Old SBI Building
Ulubari, Guwahati
781007



Neuromax

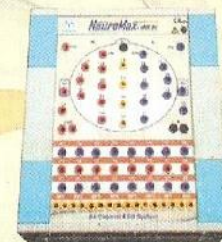
64 Channel window based Digital Video EEG and Long Term Monitoring Systems



*Superior Performance..
Favourable Price.*

Salient Features

- ♦ Facility to record/service upto 64 channels with montage bar (48 EEG, 8 Bipolar 2 EKG, 6 DC channels)
- ♦ USB interface, no external power or battery required.
- ♦ Brain mapping with multiple options.
- ♦ Online/Offline split video
- ♦ Dual monitor option for video
- ♦ Various options for EEG scrolling
- ♦ Highly Synchronized EEG with audio & video frame rate of 30 frames/sec.
- ♦ Resolution independent user interface.
- ♦ Coherence, FFT Graph and tabular data.
- ♦ Simultaneous Analysis & Acquisition of EEG data.
- ♦ Facility to mark event and write comment in analysis mode.
- ♦ Complete EEG data transfer from CD/DVD hard disc.
- ♦ Easy connectivity with Laptop/Desktop.
- ♦ Online impedance check with displays of numeric values of all electrodes.
- ♦ Online/offline reformatting of filters, low filters, sensitivity and sweep on channels.
- ♦ Use define photic stimulate protocols.
- ♦ Advanced graphic brain mapping with Spectral Array (CSA) & Density Spectral Array (DSA).
- ♦ Split screen facility to study any event/montage carefully during acquisition
- ♦ Auto backup of patient data for easy recovery
- ♦ Long distance modular amplifier design with flexibility and reliability.
- ♦ Remote control video tracking device.
- ♦ Day/night digital video canvas with high resolution zoom facility.
- ♦ Simultaneous analysis and recording.





Neuromax

The one system that does it all! Starting with complete features of a 64-channel windows based video EEG system provides additional benefits of Spike Detection, useful data exchange networks, auto recording start/stop, advanced yet easy and flexible review... and much more.

Technical Specification

No. of display channel	: 64 Channel
A/D Conversion	: 16 bit
Sensitivity	: (1, 2, 5, 7, 10, 15, 20, 30) mm/50mv & user definable
Low Filter	: 0.1, 0.3, 1, 5 Hz & user definable
High Filter	: 15, 30, 70, 100 Hz & user definable
Notch Filter	: 50/60 Hz on/off
Sweep Speed	: 7.5, 15, 30 & 60 mm/sec.
Input Impedance	: >20m ohm
CMRR	: >100 db
Noise level	: <Less than 1µv
Flash Rate	: 1 to 30 Hz
Power Supply	: 220V± 10% 50 Hz

Standard Accessories

Disc Electrodes (Gold Plated)	: 50 Nos.
EEG Paste	: 2 Jars.
Ground Wire	: 1 No.
USB Interface cable	: 1 No.
Photic Flash	: 1 No.
Paper Rim (A4 Size)	: 1 No.
Coloured Camera	: 1 No.
Electrode Board	: 1 No.
EEG Software backup CD	: 1 No.
EEG Trolley Optional	: 1 No.

Computer Hardware

Core to Duo, 1 GB RAM, 360 GB Hard Disc.
17" LCD TFT Colour Monitor, Key Board, Mouse
Laser Printer/Inkjet Printer optional

MARKETED BY
R.S. Enterprises



Head Office
R.S. Enterprises
Mayfair Crown B-202
Zila Parishad Road
Jyoti Nagar, Siliguri
734001

Kolkata Branch
R.S. Enterprises
Upohor Complex
C-2/614, Chakgaria
Kolkata - 94

Guwahati Branch
R.S. Enterprises
3rd Floor,
Above Old SBI Building
Ulubari, Guwahati
781007

www.rsenterprisesindia.co.in
E-mail: rsenterprises27@gmail.com
Phone: 98323632661 / 9800685887 / 9474878436

MANUFACTURED BY
Medicaid Systems

Serving health...through technology