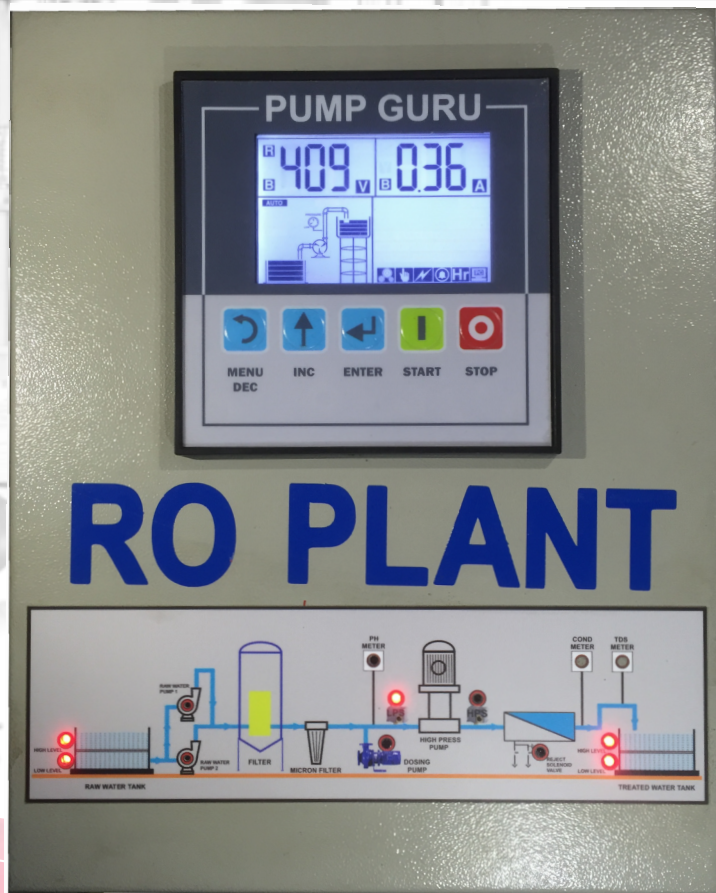
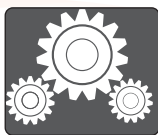


# RO PLANT CONTROLLER



## RO GURU

## RO PLANT



Setting



Auto / Manual



Power



Alarms



Total hours



Modbus

## The most Innovative Technology

## for complete care of your plant



Pump Guru is designed with latest technological features, functions & options to cater the wide demand from domestic to industrial RO pumps with global acceptance

- Excellent Control
- High Reliability
- Efficient pump control
- Compact in size
- Clear & visible LCD Display
- 12 types of protection features
- Graphic indication of pump running
- Proven Track Record

## Small | Efficient | Economical

### Applications:

PUMP GURU make RO Controller **RO GURU** is Micro controller based Control Panel suited for Lower sized RO plants as they have the complete operating logic of the process pre-programmed. RO GURU's basic model is having many Inputs like Low Pressure Switch(LPS), High Pressure Switch(HPS), Treated Water Tank Level Float Switch, Conductivity Cell inputs and controls the Raw Water Pump(RWP), High Pressure Pump(HPP), Flush Solenoid Valve in different Sequences. The advanced settings are also available for giving Protection to Pumps like Overload, Dry Running and also gives Alarm to alert the Overload of High Pressure Pump, Overload Trip, Conductivity Over or down range etc.,

### Features

#### ◆ Protection for Pump

1. Over Current (Over Load) Protection
2. Over Voltage Protection
3. Under Voltage Protection
4. Phase Reversal Protection
5. Phase Loss Protection
6. Phase Unbalance Protection
7. Pump Dry Run Protection
8. Pump Stalled / Short Circuit Protection.

#### ◆ Graphical Display

1. Graphical LCD Displaying Pump running state & water level indication of both tanks
2. Display of all Three Phase Voltage & Three Phase Current continuously
3. Pump Running Graphics
4. Pressure Level Status – Pressure High / Low
5. Display of last Twenty Faults
6. Total Pump Accumulative Running Time Display
7. Pump Last Run Time Display
8. Selection of Auto / Manual Mode

#### ◆ Pump Operation

1. Auto / Manual
2. Time Based ON/OFF.
3. Water supply by pressure control of High & Low Pressure Switch
4. Water Supply by Level control through Level probe or Float Switch

#### ◆ General

1. User-Friendly wiring connection
2. Integrated Design, Easy To Install
3. Industrial Grade Design

#### ◆ Optional

1. RS - 485 Communication

#### ◆ Areas of Applications:

- 1) Water Treatment Industries
- 2) Multi- Storey Apartments
- 3) Hotels & Restaurants
- 4) Pharmaceutical Industry



White Screen

SCAN FOR DETAILS

