

KABIR INSTRUMENTS & TECHNOLOGY

GLASS TUBE ROTAMETER

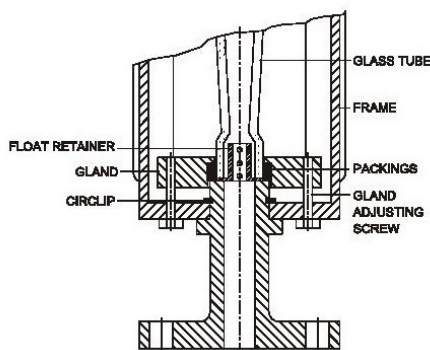
4-20 mA
Out put



DESCRIPTION :-

“KABIR” manufactures Variable Area Flowmeters (Rotameters) which are mainly used for Liquid & Gas applications for measurement of Rate of Flow indication. The Float moves up & down in the tapered Borosilicate Glass Tube with fluid flow from bottom to top. The Float takes up a position where buoyancy forces and the float weight are balanced in proportion to flow rate. The vertical position of the float as indicated by scale is the measure of the instantaneous flow rate.

MATERIAL OF CONSTRUCTION :-



End fittings

- MS, CS, SS304, SS316, CF8M, CF8, C.I. PTFE lined, C.I. SS lined, PVC and Any other desired material subject to its Availability.

Tube

- Borosilicate Glass.

Float

- SS 316, PTFE and other on request.

Packing

- Neoprene, PTFE, Silicon, Viton.

Frame & Cover

- MS, Optionally SS.

PERFORMANCE :-

Accuracy :- +/- 2% F.S.D.

Temperature Ratings: - Maximum Operating Temperature rating is 121 °C for Gas services and 93° C for Liquid services.

Repeatability :- 0.5 %

Rangibility :- 10:1

Connections :- Flanged OR Screwed OR Triclover Joint OR Hose Nipple.

Enclosure :- IP 55 OR IP 65 on request.

Scale length :- 220 mm.

Pressure Ratings :-

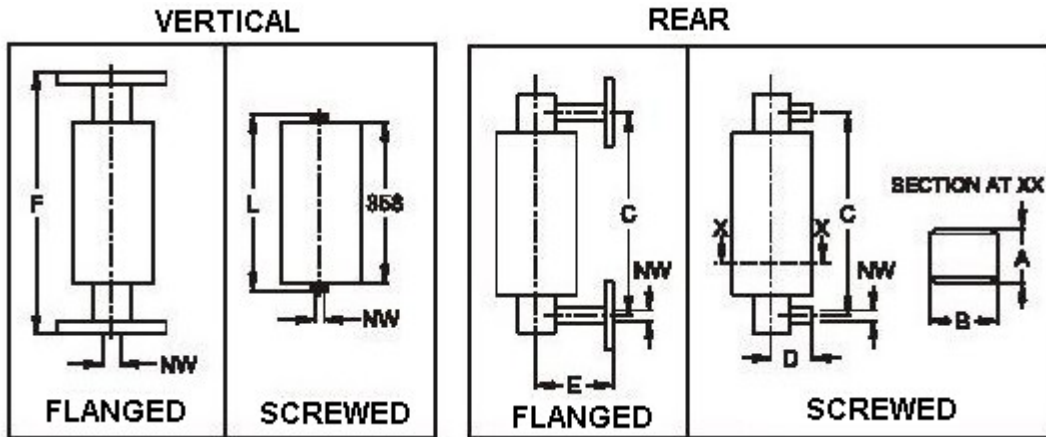
Meter	Max. Op. Press.
-------	-----------------

Size	in Kg/Cm ² (g)
15	20
20	17
25	12
40	10
50	08
80	06

KABIR

Kit

DIMENSIONAL DETAILS :-



NW	F	L	C	E	D	A	B
15	500	400	440	90	55	95	90
20	500	400	440	90	60	95	90
25	500	400	440	115	65	120	115
40	500	400	500	125	70	140	140
50	500	450	500	150	70	155	160
80	500	NA	500	170	NA	190	190

CAPACITY TABLE :-

Rate of flow of Water at 20°C with SS 316 Float (LPH)	Rate of flow of Air at ambient Temp., 760 Torr Pressure								
	USGPM	316SS Float (NLPH)	SCFM	PTFE Float (NLPH)	SCFM	Road Rubber Float (NLPH)	SCFM	Glass Float (NLPH)	SCFM
.....	1-10	0.001-0.01
.....	2.5-25	0.0016-0.016
.....	3-30**	0.0018-0.018
.....	4-82	0.002-0.02
0.6-6	0.003-0.03	26-260	0.016-0.16	9-90	0.006-0.06	6-60	0.0038-0.038	13.5-135	0.0085-0.085
1.0-10	0.004-0.04	36-360	0.023-0.23	16-160	0.010-0.10	10-100	0.006-0.06	19-190	0.012-0.12
1.6-16	0.007-0.07	55-550	0.035-0.35	25-250	0.016-0.16	19-190	0.012-0.12
2.5-25	0.01-0.10	80-800	0.050-0.50	40-400	0.025-0.25	26-260	0.016-0.16
0.6-6	0.003-0.03	26-260	0.016-0.16	9-90	0.006-0.06	6-60	0.0038-0.038	13.5-135	0.0085-0.085
1.8-18	0.004-0.04	36-360	0.023-0.23	16-160	0.010-0.10	10-100	0.006-0.06	19-190	0.012-0.12
1.6-16	0.007-0.07	55-550	0.035-0.35	25-250	0.016-0.16	19-190	0.012-0.12
2.5-25	0.01-0.10	80-800	0.050-0.50	40-400	0.025-0.25	26-260	0.016-0.16
4-40	0.018-0.18	110-1100	0.070-0.70	65-650	0.041-0.41	50-500*	0.032-0.32
6-60	0.026-0.26	185-1850	0.115-1.15	100-1000	0.063-0.63	80-800*	0.050-0.50
10-100	0.044-0.44	300-3000	0.190-1.90	170-1700	0.107-1.07	130-1300*	0.082-0.82
16-160	0.07-0.70	500-5000	0.310-3.10	360-3600	0.225-2.25	185-1850*	0.115-1.15

■ ■ Manufacturer and Exporter of
■ Flow & Level Measuring Instruments

☎ +91 9722212144 / 9979119649 ☎ +91 265 2637999

✉ kabirinstru108@gmail.com • info@kabirinstruments.com

📍 Plot No C1B-888/1/A, G.I.D.C. Estate, Makarpura, Vadodara - 390010. Gujarat INDIA.

