

Technical Specifications

ACP Series

| Description | | Units | BHD 24 | BHD 28 | BHD 32 | BHD 34 |
|-------------------------|---------------------------------|-------|-------------------------------------|-----------|-----------|-----------|
| Performance | Max Radius of Placing Boom | m | 24 | 28 | 32 | 34 |
| | Free Standing Height | m | 20,9 | 20,7 | 20,7 | 20,7 |
| | Slewing Range | deg. | 360 | 360 | 360 | 360 |
| | Total Weight | kgs. | 13150 | 15350 | 15950 | 16600 |
| | Weight of Heaviest Component | kgs. | 3500 | 4250 | 4500 | 4987 |
| | Electric Power | | 415V/50Hz | | | |
| Motor | Power | kW | 15 | 18,5 | 18,5 | 18,5 |
| Hydraulic System | System Pressure | MPa | 30 | 30 | 30 | 30 |
| | Oil Tank Capacity | ltn. | 100 | 160 | 160 | 160 |
| Controls | | | Radio Remote Control | | | |
| | | | Manual | | | |
| | Section of Tubular Column | (mm) | Ø 75 x 0.75 | | | |
| | Boom Type | | Hydraulically Foldable Arm Sections | | | |
| | Delivery Pipeline Diameter | mm | 125 | | | |
| | Length of End Hose | m | 3-4 | | 4 | |
| 1st Section | Length | m | 6,3 | 6,3 | 6,6 | 6,3 |
| | Articulation | deg. | 0° - 90° | 0° - 90° | 0° - 90° | 0° - 90° |
| 2nd Section | Length | m | 7,5 | 6,5 | 7,9 | 6,4 |
| | Articulation | deg. | 0° - 180° | 0° - 180° | 0° - 180° | 0° - 180° |
| 3rd Section | Length | m | 7,6 | 6,6 | 7,6 | 6,3 |
| | Articulation | deg. | 0° - 205° | 0° - 246° | 0° - 180° | 0° - 246° |
| 4th Section | Length | m | — | 6,6 | 7,5 | 8 |
| | Articulation | deg. | — | 0° - 234° | 0° - 205° | 0° - 234° |
| Climbing | Climbing Type | | Hydraulic | | | |
| | Internal Climbing Step Distance | m | 0.80 | | | |
| | Floor Frame | | Hole Prepared in Floor | | | |



ALL INDIA NETWORK



SPARE PARTS & SERVICE

ACE has all India Sales and Service network operating out of all the major cities. These outlets are fully equipped to provide genuine spare parts and services by company trained engineers. These outlets are further supported by company officials based at Delhi, Mumbai, Chennai, Kolkata, Ahmedabad, Surat, Pune, Jaipur, Chandigarh, Ranchi, Raipur, Indore, Bhubaneswar, Lucknow, Jamnagar, Hyderabad, Bangalore, Guwahati, Patna, Vizag & Cochin.

CUSTOMER CARE

TOLL FREE No
1800 1800 004

- WORKS
- ▲ REGIONAL OFFICES
- ▲ AREA OFFICES
- SALES AND SERVICE DEALERS



MARKETING HQ.

2th Floor, "TD Center", Jandla, New Delhi - 25
Ph: +91-11-45649900 (30 Lines), Fax: 40549922
Email: marketing@ace-cranes.com, works@ace-cranes.com

NEW DELHI OFFICE

Dudhwa Link Road, Dudhwa, Palwal-121102, Haryana
Ph: +91-1275-280111, Fax: +91-1275-280133
CN: L74699HR1995PLG053960

MUMBAI OFFICE

31, "Kalyan Court", Chembur, Mumbai - 74
Ph: +91-22-25206646, 25207070, Telex: 25207071
Email: acoemumbai@ace-cranes.com

KOLKATA OFFICE

"Forma Tower" 64-A, Second Floor, A/C Base Road, Kolkata - 14, Ph: +91-33-65012050
E-mail: acekolkata@ace-cranes.com

CHENNAI OFFICE

1st Floor, "Alca Regency", 165, Adams Road, Alwar Pet, Chennai - 16
Ph: +91-44-64314553, Telex: 24914252
Email: acochennai@ace-cranes.com

ACE

Action Construction Equipment Ltd.

Contact:



ACE reserves the right to any modification without prior notice. Weight is approximate. Technical data is subject to change. For more information, please contact us at the nearest factory.



www.ace-cranes.com

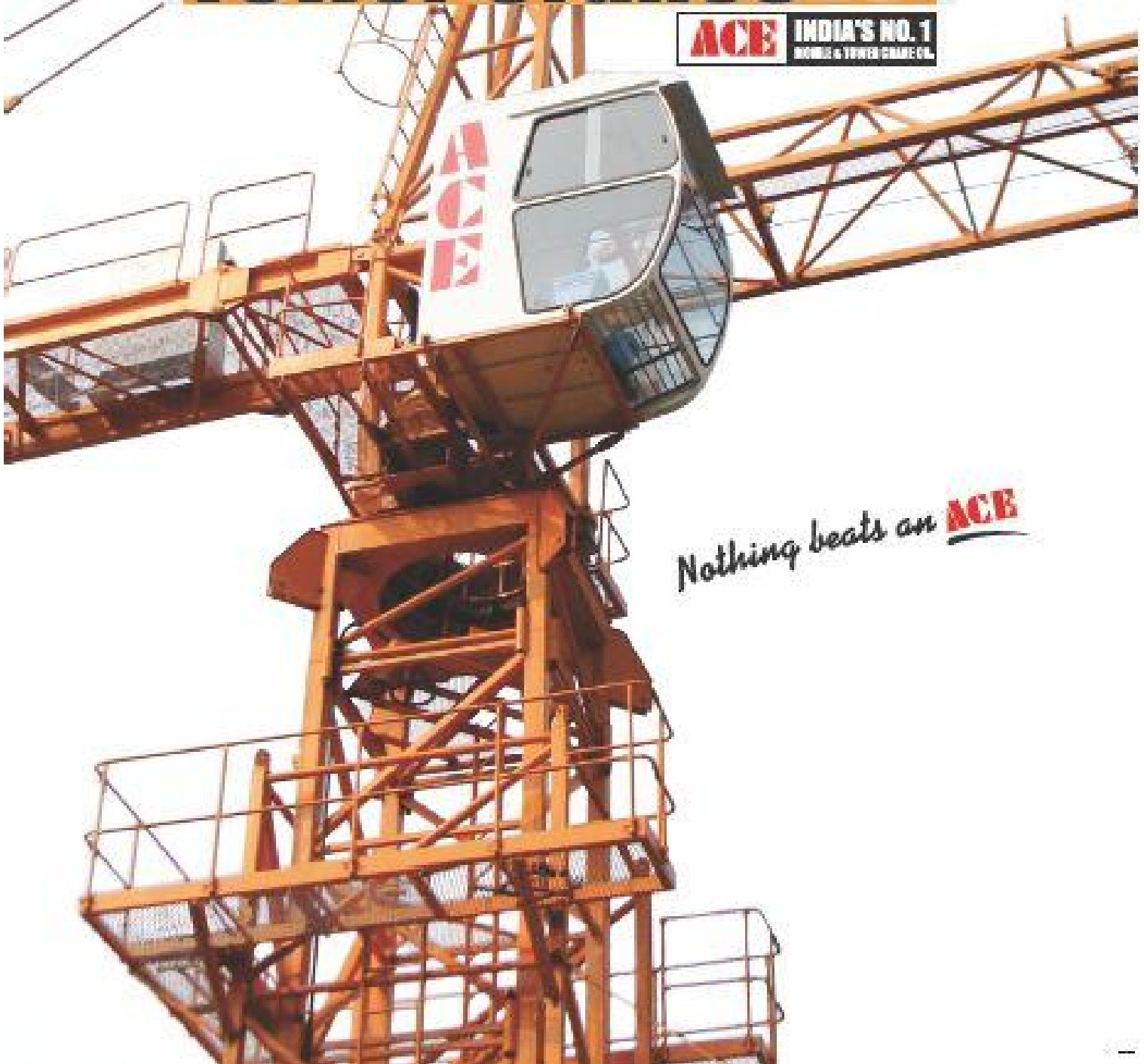
ACE

TOWER CRANES

Tower Cranes

ACE INDIA'S NO. 1
HORIZONTAL & TOWER CRANE CO.

*Nothing beats an **ACE***





Corporate Office

ACE - Action Construction Equipment Limited is India's largest Mobile Cranes and Tower Cranes manufacturing company. In addition to Tower Cranes, ACE also offers Mobile Cranes, Loaders, Vibratory Rollers, Truck Mounted Cranes, Crawler Cranes, Forklifts, Tractors and other Construction Equipment. ACE has a consolidated presence in all major Infrastructure, Construction, Heavy Engineering and Industrial Projects across the country.

The policy of responding with speed and expertise has been rewarded over the years in the form of repeat business, resulting in constant growth of the company and making us one of the leading companies in the Mobile Cranes, Tower Cranes and Construction Equipment sector in the country.



Tower Crane Plant

Another factor driving our growth has been the versatility of our equipment to satisfy a vast range of possible applications. Our equipment has been successfully used in many sectors like Infrastructure Construction, Power, Ports & Shipyards, Dams, Metro Rail, Roads, Mining, Steel, Engineering, Automobile, Railways, Cement, Petroleum, Defence, Chemicals & Fertilizer, Warehousing, Logistics, Building Construction etc., to name a few.



ACE Training Centre

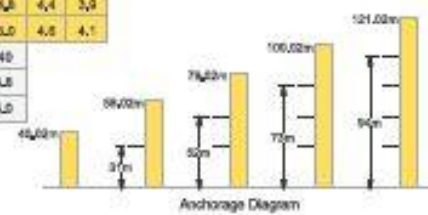


Production Bay No. 5



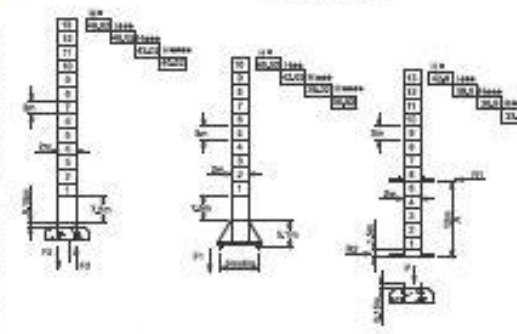
Load Capacity

| Radius (m) | 20 | 22 | 25 | 30 | 31.8 | 35 | 37 | 40 | 42 | 45 | 47 | 50 | 52 | 55 |
|------------|------|-----|-----|-----|------|-----|-----|-----|-----|-----|-----|-----|-----|-----|
| 12.0 | 10.4 | 9.6 | 8.0 | 6.3 | 6.8 | 4.9 | 4.4 | 3.9 | 3.5 | 3.1 | 2.8 | 2.4 | 2.3 | |
| 12.0 | 10.6 | 9.8 | 8.0 | 6.3 | 6.8 | 5.0 | 4.5 | 4.1 | 3.7 | 3.3 | 3.1 | 2.8 | 2.6 | 2.5 |
| 12.0 | 12.4 | 9.0 | 8.1 | 7.0 | 6.4 | 5.0 | 4.6 | 4.2 | 3.8 | 3.4 | 3.1 | 2.8 | 2.6 | 2.5 |
| 12.0 | 10.5 | 9.2 | 8.2 | 7.1 | 6.5 | 5.0 | 4.6 | 4.2 | 3.8 | 3.4 | 3.1 | 2.8 | 2.6 | 2.5 |
| 12.0 | 10.6 | 9.3 | 8.3 | 7.3 | 6.7 | 5.1 | 4.7 | 4.3 | 3.9 | 3.5 | 3.2 | 2.9 | 2.7 | 2.6 |

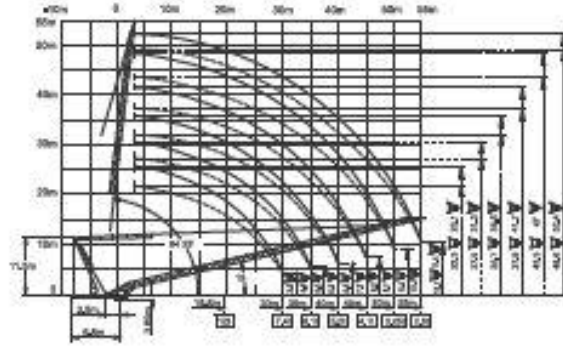
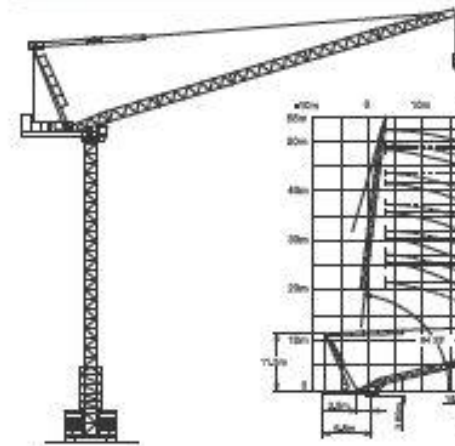


Specifications

| | | | | | | |
|------------------|-------------------|-------|------|------|------|------|
| No of Phases | 3 | 3 | 3 | 3 | 3 | 3 |
| Speed (m/min) | 0-40 | 0-85 | 0-60 | 0-20 | 0-30 | 0-40 |
| Holding Load (t) | 6.0 | 4.0 | 3.0 | 12.0 | 8.0 | 6.0 |
| Power (kw) | 90 | 55 | 55 | 85 | 55 | 95 |
| Swiveling | Speed (m/min) | 0-0.7 | | | | |
| | Power (kw) | 2 x 9 | | | | |
| Trolleying | Speed (m/min) | 0-28 | | | | |
| | Power (kw) | 4x14 | | | | |
| Luffing | Speed (m/min) | ≤ 3.0 | | | | |
| | Power (kw) | 45 | | | | |
| Main Supply | 415V / 50Hz | | | | | |
| Electric Power | 118kw (147.5 kVA) | | | | | |



| | | | | | | |
|----|-------|-------|--------|----|-------|-------|
| F2 | ◇ 174 | △ 234 | ● 100 | F1 | ◇ 118 | △ 154 |
| F3 | ◇ 111 | △ 237 | ● 57.5 | | ● 97 | |
| A | 12m | 18m | | R1 | 3M | 25.5 |
| R2 | 28.5 | 22.5 | | P | 1071 | 1011 |
| | | | | | | 81.5 |



F Freeform ◇ In Service △ Out of Service ● Dead weight without ball and counter weights but with longest jib and free standing height.
 P Vertical Load H Free Standing Height Jib * 20x30m ** 42x45m *** 50x50m **** 55m

Technical Specifications

ACS Series

| S.No. | Description | Units | BHD 12 | BHD 13 | BHD 15 |
|-------|-------------------------------------|-------|--------------------|--------------------|---------------------|
| 1 | Max Radius of Piping Boom | m | 12,00 | 13,50 | 18,00 |
| 2 | Max. Height Working Reach | m | 14,3 | 15,3 | 20,5 |
| 3 | Max.Depth Working Reach | m | 5,5 | 8 | 10,7 |
| 4 | Elevation Angle | deg. | 90 | 90 | 90 |
| 5 | Swivling Range | deg. | 360 | 360 | 360 |
| 6 | Swivling | °/min | 0,70 | 0,70 | 0,60 |
| 7 | Hydraulic Pressure | MPa | 20 | 28 | 28 |
| 8 | Motor Power | kW | 4 | 4 | 7,5 |
| 9 | Delivery Pipeline Diameter | mm | 125 | 125 | 125 |
| 10 | Length of End Hose | m | 2,50 | 2,50 | 3,00 |
| 11 | Length of Boom I | m | 6,5 | 6 | 7,3 |
| 12 | Length of Boom II | m | 5,5 | 4 | 5,4 |
| 13 | Length of Boom III | m | — | 4 | 5,3 |
| 14 | Footprint of machine | mm | 3,7 x 3,7 | 3,7 x 3,7 | 4,7 x 4,7 |
| 15 | Overall Dimension | m | 8,20 x 2,40 x 2,00 | 8,00 x 2,40 x 2,35 | 10,80 x 2,45 x 2,35 |
| 16 | Total Weight without counter weight | kg | 2200 | 2350 | 4050 |
| 17 | Counter Weight | kg | 1240 | 1215 | 2500 |
| 18 | Weight of Heaviest Component | kg | 2200 | 1750 | 1745 |

