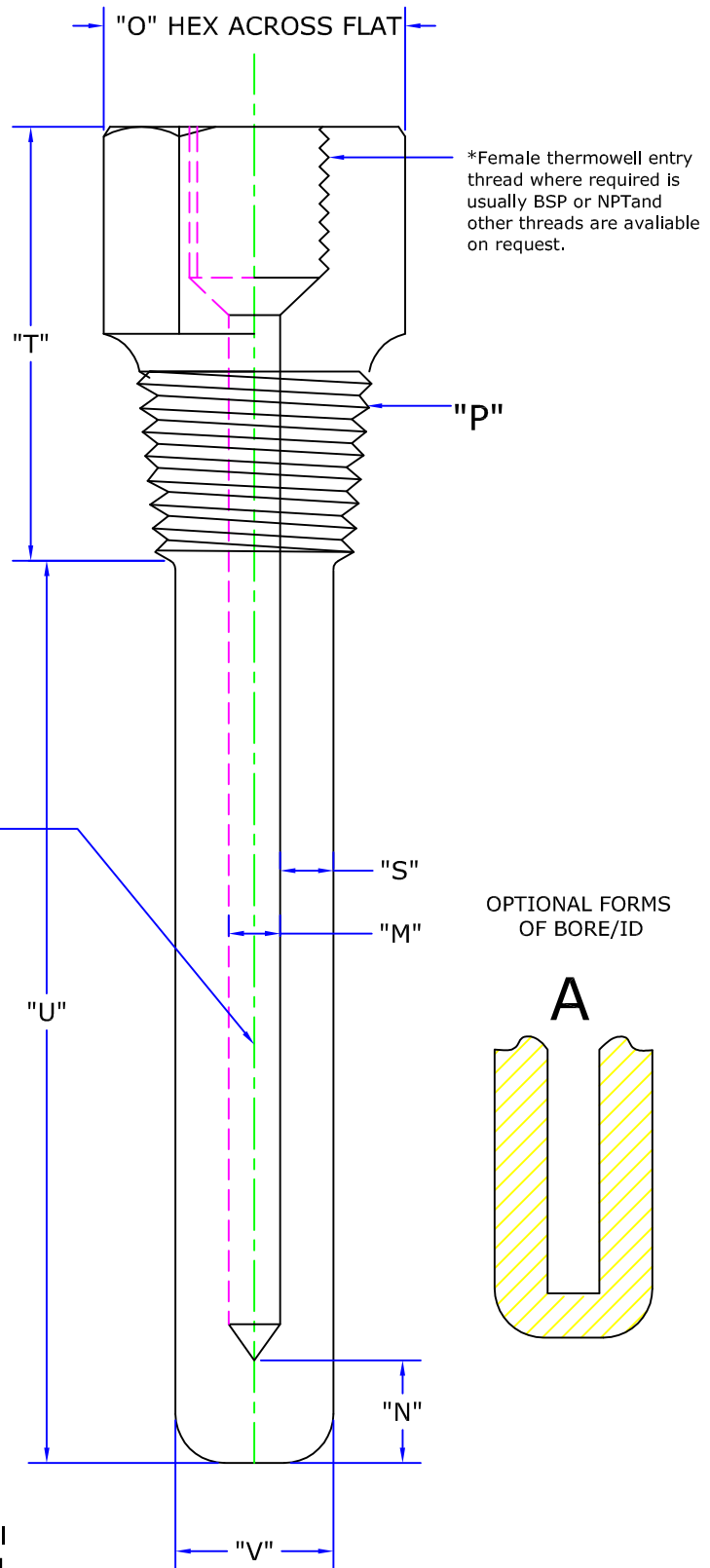


PARALLEL THERMOWELL WITH NPT THREAD

- "O" – If no lagging extension is required this demension is typical 25mm.
- "P" – Male process entry thread where required is usually BSP or NPT thread. ISO and other threads are available on request.

- "M" – Bore Size.
- "V" – Hot End Diameter / Base Dia
- "S" – Minimum Wall Thickness.
- "U" – Insertion length.
- "N" – Bottom Thickness.



*Bore/ID of thermowell is usually such that the sensor can be easily inserted but no larger in order to minimise air gap and thus maximise thermal response. This can also be a reduced bore at the tip of the thermowell accommodating the sensitive portion of the sensing element/insert.

- * Custom built in brass, MS, various grades of stainless steels Inconel and in special materials to meet customer requirements.
- * Available with either: screwed BSP/NPT male process entry: with hexagons or machined wrench flats or with plain or drilled flanges.
- * Fabrications welded construction with a parallel well or machined from a solid with a parallel or tapered well. Designed and built to suit specific operational requirements, These thermowell can withstand high pressure, corrosion etc. and are compatible to the properties and application.